

Cyclin E1 Rabbit mAb (AR1049)

Key Features

Host Species:	Rabbit
Reactivity:	Human,Mouse,Rat
Applications:	WB,IHC,IF,IP,ELISA
Isotype:	IgG,Kappa
MW:	47kD (Calculated) 47kD (Observed)

Recommended Dilution Ratios

IHC:	1:400-1000
WB:	1:1000-5000
IF:	1:200-1000
ELISA:	1:5000-20000
IP:	1:50-200

Storage

-15°C to -25°C/1 year (Do not lower than -25°C)

Basic Information

Clonality	Monoclonal
-----------	------------

Immunogen Information

Specificity	Endogenous
-------------	------------

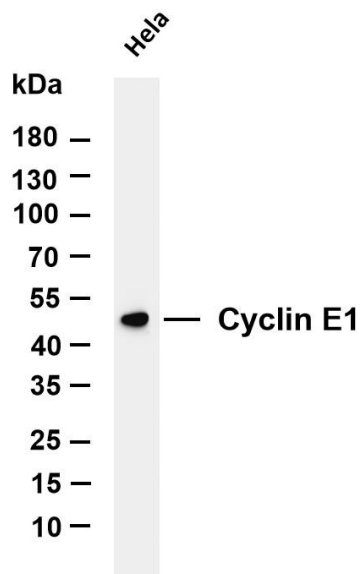
Target Information

Gene name	CCNE1
Protein Name	G1/S-specific cyclin-E1

Organism	Gene ID	UniProt ID
Human	898	P24864
Mouse	12447	Q61457
Rat		P39949

Cellular Localization	Nuclear
Tissue specificity	Highly expressed in testis and placenta. Low levels in bronchial epithelial cells.

Validation Data

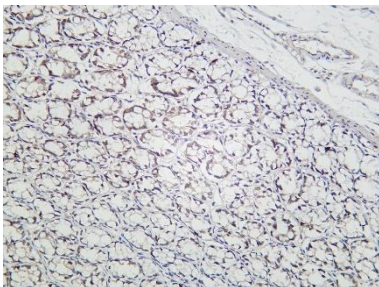


Various whole cell lysates were separated by 4-20% SDS-PAGE, and the membrane was blotted with anti-Cyclin E1 antibody. The HRP conjugated Goat anti-Rabbit IgG(H + L) antibody was used to detect the antibody.

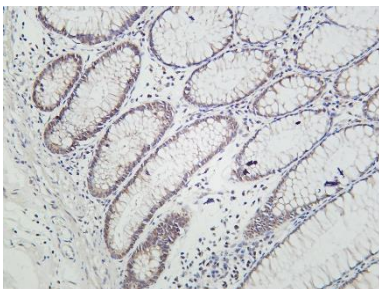
Lane 1: HeLa

Predicted band size: 47kDa

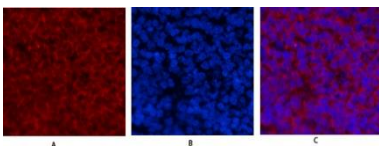
Observed band size: 47kDa



Rat colon was stained with Anti-Cyclin E1 rabbit antibody



Human colon was stained with Anti-Cyclin E1 rabbit antibody



Immunofluorescence analysis of rat-spleen tissue.

1. primary Antibody(red) was diluted at 1:200(4° overnight).
2. Cy3 labeled Secondary antibody was diluted at 1:300(room temperature, 50min).
3. DAPI (blue) 10min.

Picture A: Target. Picture B: DAPI. Picture C: merge of A+B

For Research Use Only