

MMP13 Rabbit mAb (AR1048)

Key Features

Host Species:	Rabbit
Reactivity:	Human,Mouse
Applications:	WB,IHC,IF,IP,ELISA
Isotype:	IgG,Kappa
MW:	54kD (Calculated) 60kD (Observed)

Recommended Dilution Ratios

IHC:	1:100-500
WB:	1:500-2000
IF:	1:200-1000
ELISA:	1:5000-20000
IP:	1:50-200

Storage

-15°C to -25°C/1 year (Do not lower than -25°C)

Basic Information

Clonality	Monoclonal
-----------	------------

Immunogen Information

Specificity	Endogenous
-------------	------------

Target Information

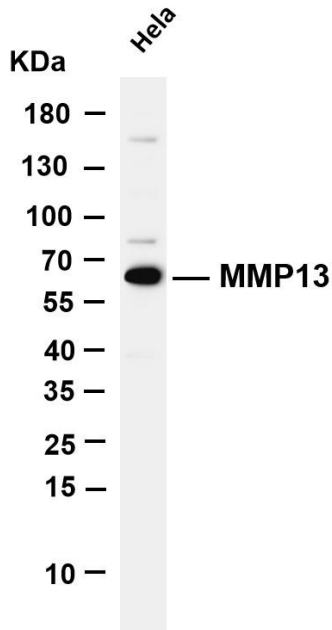
Gene name	MMP13
Protein Name	Collagenase 3

Organism	Gene ID	UniProt ID
Human	4322	P45452
Mouse		P33435

Cellular Localization	Secreted
Tissue specificity	Detected in fetal cartilage and calvaria, in chondrocytes of hypertrophic cartilage intervertebrae and in the dorsal end of ribs undergoing ossification, as well as in osteoblasts and periosteal cells below the inner periosteal region of ossified ribs. Detected in

chondrocytes from in joint cartilage that have been treated with TNF and IL1B, but not in untreated chondrocytes. Detected in T lymphocytes. Detected in breast carcinoma tissue.

Validation Data



Various whole cell lysates were separated by 4-20% SDS-PAGE, and the membrane was blotted with anti-MMP13 antibody. The HRP-conjugated Goat anti-Rabbit IgG(H + L) antibody was used to detect the antibody.

Lane 1: HeLa

Predicted band size: 54kDa

Observed band size: 60kDa

For Research Use Only