

KLF4 Rabbit mAb (AR1050)

Key Features

Host Species:	Rabbit
Reactivity:	Human, Mouse, Rat
Applications:	WB, IHC, IF, IP, ELISA
Isotype:	IgG, Kappa
MW:	55kD (Calculated) 60kD (Observed)

Recommended Dilution Ratios

IHC:	1:200-1000
WB:	1:1000-5000
IF:	1:200-1000
ELISA:	1:5000-20000
IP:	1:50-200

Storage

-15°C to -25°C/1 year (Do not lower than -25°C)

Basic Information

Clonality	Monoclonal
-----------	------------

Immunogen Information

Specificity	Endogenous
-------------	------------

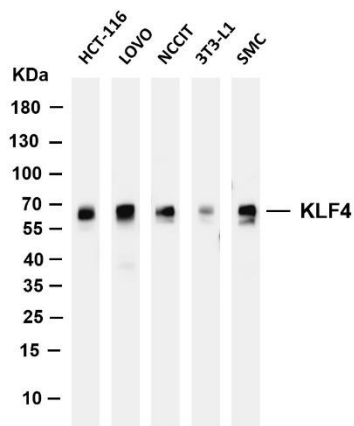
Target Information

Gene name	KLF4
Protein Name	Krueppel-like factor 4

Organism	Gene ID	UniProt ID
Human	9314	O43474
Mouse		Q60793

Cellular Localization	Nuclear
Tissue specificity	Cervix, Lung, Placenta, Substantia nigra, Tongue

Validation Data



Various whole cell lysates were separated by 4-20% SDS-PAGE, and the membrane was blotted with anti-KLF4 antibody. The HRP-conjugated Goat anti-Rabbit IgG(H + L) antibody was used to detect the antibody.

Lane 1: HCT-116

Lane 2: LOVO

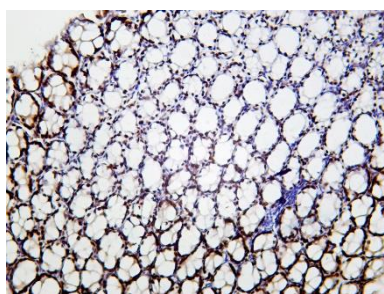
Lane 3: NCCIT

Lane 4: 3T3-L1

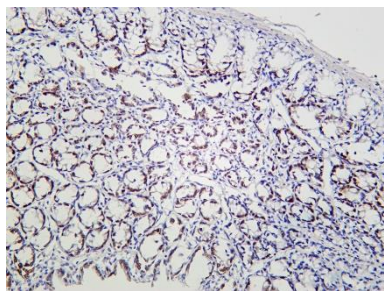
Lane 5: SMC

Predicted band size: 55kDa

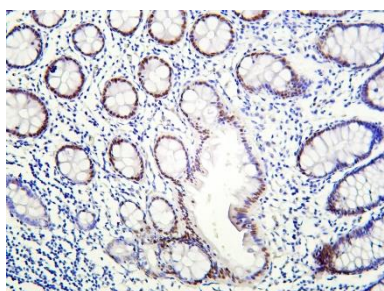
Observed band size: 60kDa



Mouse colon was stained with Anti-KLF4 rabbit antibody



Mouse colon was stained with Anti-KLF4 rabbit antibody



Human colon was stained with Anti-KLF4 rabbit antibody

For Research Use Only