

## ATF6A Rabbit mAb (AR1051)

### Key Features

|               |                                       |
|---------------|---------------------------------------|
| Host Species: | Rabbit                                |
| Reactivity:   | Human,Mouse,Rat                       |
| Applications: | WB,IF,IP,ELISA                        |
| Isotype:      | IgG,Kappa                             |
| MW:           | 75kD (Calculated)<br>100kD (Observed) |

### Recommended Dilution Ratios

|        |              |
|--------|--------------|
| WB:    | 1:1000-5000  |
| IF:    | 1:200-1000   |
| ELISA: | 1:5000-20000 |
| IP:    | 1:50-200     |

**Storage** -15°C to -25°C/1 year (Do not lower than -25°C)

### Basic Information

Clonality Monoclonal

### Immunogen Information

Specificity Endogenous

### Target Information

Gene name ATF6

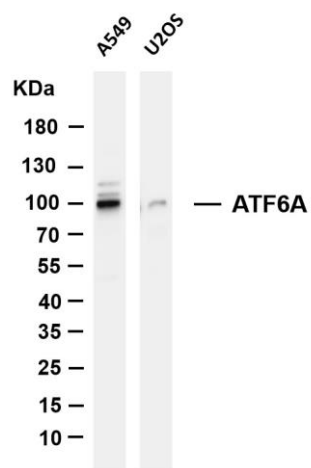
Protein Name ATF6A

| Organism | Gene ID | UniProt ID |
|----------|---------|------------|
| Human    | 22926   | P18850     |

Cellular Localization Cytoplasm

Tissue specificity Ubiquitous.

## Validation Data



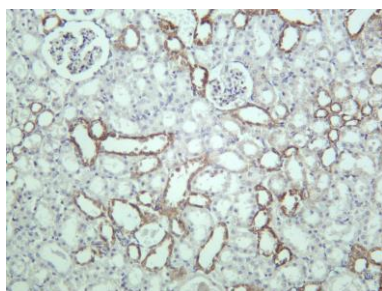
Various whole cell lysates were separated by 4-20% SDS-PAGE, and the membrane was blotted with anti-ATF6A antibody. The HRP-conjugated Goat anti-Rabbit IgG(H + L) antibody was used to detect the antibody.

Lane 1: A549

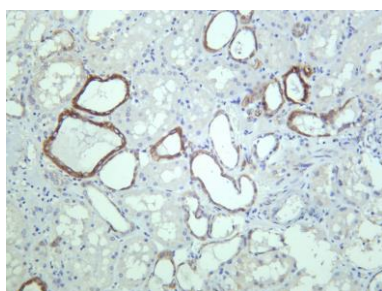
Lane 2: U2OS

Predicted band size: 75kDa

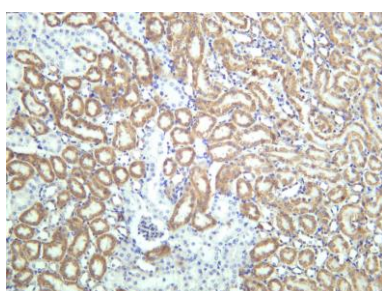
Observed band size: 100kDa



Rat kidney was stained with anti-ATF6A Rabbit antibody



Human kidney was stained with anti-ATF6A Rabbit antibody



Mouse kidney was stained with anti-ATF6A Rabbit antibody

