

## GSK3 $\beta$ (Phospho Ser9) Rabbit mAb (AR1054)

### Key Features

Host Species:	Rabbit
Reactivity:	Human, Mouse
Applications:	WB, IHC, IF, IP, ELISA
Isotype:	IgG, Kappa
MW:	47kD (Calculated) 47kD (Observed)

### Recommended Dilution Ratios

IHC:	1:200-1000
WB:	1:1000-5000
IF:	1:200-1000
ELISA:	1:5000-20000
IP:	1:50-200

### Storage

-15°C to -25°C/1 year (Do not lower than -25°C)

### Basic Information

Clonality	Monoclonal
-----------	------------

### Immunogen Information

Specificity	This antibody detects endogenous levels of GSK3 $\beta$ only when phosphorylated at Ser9. This antibody does not recognize phosphorylated at other sites.
-------------	---

### Target Information

Gene name	GSK3B
Protein Name	Glycogen synthase kinase-3 beta

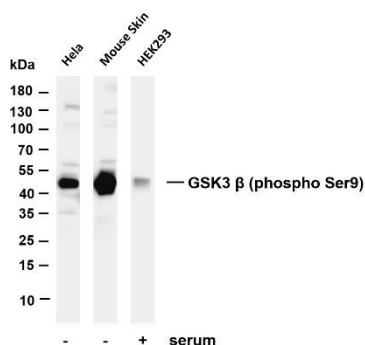
Organism	Gene ID	UniProt ID
Human	2932	P49841
Mouse	56637	Q9WV60
Rat	84027	P18266

Cellular Localization	Cytoplasmic, Membranous
-----------------------	-------------------------

## Tissue specificity

Expressed in testis, thymus, prostate and ovary and weakly expressed in lung, brain and kidney. Colocalizes with EIF2AK2/PKR and TAU in the Alzheimer disease (AD) brain.

## Validation Data



Various whole cell lysates were separated by 4-20% SDS-PAGE, and the membrane was blotted with anti-GSK3  $\beta$  (phospho Ser9) antibody. The HRP-conjugated Goat anti-Rabbit IgG(H + L) antibody was used to detect the antibody.

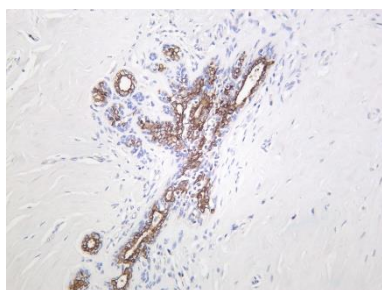
Lane 1: HeLa

Lane 2: Mouse skin

Lane 3: HEK293 treated with serum in 30 minutes

Predicted band size: 47kDa

Observed band size: 47kDa



Human breast carcinoma was stained with Anti-GSK3  $\beta$  (phospho Ser9) rabbit antibody.

For Research Use Only