

Glutaminase C Rabbit mAb (AR1055)

Key Features

Host Species:	Rabbit
Reactivity:	Human,Mouse,Rat
Applications:	WB,IHC,IF,IP,ELISA
Isotype:	IgG,Kappa
MW:	73kD (Calculated) 60-65kD (Observed)

Recommended Dilution Ratios

IHC:	1:200-1000
WB:	1:1000-5000
IF:	1:200-1000
ELISA:	1:5000-20000
IP:	1:50-200

Storage

-15°C to -25°C/1 year (Do not lower than -25°C)

Basic Information

Clonality	Monoclonal
-----------	------------

Immunogen Information

Specificity	Endogenous
-------------	------------

Target Information

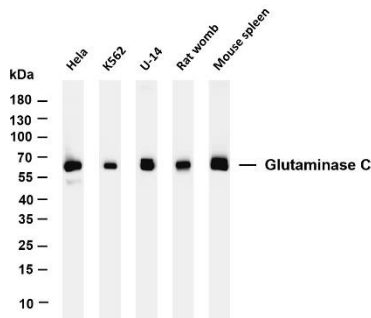
Gene name	GLS GLS1 KIAA0838
Protein Name	GLSK

Organism	Gene ID	UniProt ID
Human	2744	O94925
Mouse	14660	D3Z7P3
Rat	24398	P13264

Cellular Localization	Cytoplasm
Tissue specificity	Isoform 1 and isoform 3 are detected in brain cortex. Isoform 3 is highly expressed in astrocytoma, ganglioglioma and ependymoma.

Isoform 1 is highly expressed in brain and kidney, but not detected in liver. Isoform 3 is highly expressed in heart and pancreas, detected at lower levels in placenta, lung, pancreas and kidney, but is not detected in liver. Isoform 2 is expressed in cardiac and skeletal muscle.

Validation Data



Various whole cell lysates were separated by 4-20% SDS-PAGE, and the membrane was blotted with anti-Glutaminase C antibody. The HRP-conjugated Goat anti-Rabbit IgG(H + L) antibody was used to detect the antibody.

Lane 1: HeLa

Lane 2: K562

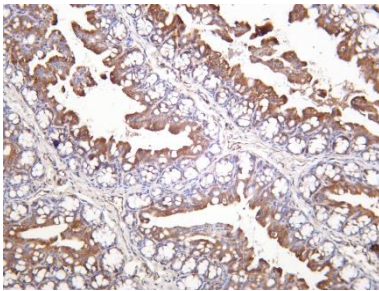
Lane 3: U-14

Lane 4: Rat womb

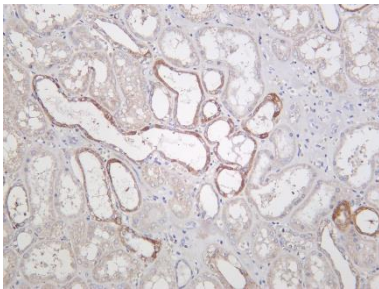
Lane 5: Mouse spleen

Predicted band size: 73kDa

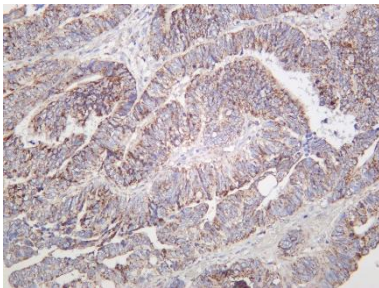
Observed band size: 60-65kDa



Mouse colon was stained with Anti-Glutaminase C rabbit antibody



Human kidney was stained with Anti-Glutaminase C rabbit antibody



Human colon carcinoma was stained with Anti-Glutaminase C rabbit antibody