

UQCRC2 Rabbit mAb (AR1056)

Key Features

Host Species:	Rabbit
Reactivity:	Human,Mouse,Rat
Applications:	WB,IHC,IF,IP,ELISA
Isotype:	IgG,Kappa
MW:	48kD (Calculated) 48kD (Observed)

Recommended Dilution Ratios

IHC:	1:200-1000
WB:	1:1000-5000
IF:	1:200-1000
ELISA:	1:5000-20000
IP:	1:50-200

Storage

-15°C to -25°C/1 year (Do not lower than -25°C)

Basic Information

Clonality	Monoclonal
-----------	------------

Immunogen Information

Specificity	Endogenous
-------------	------------

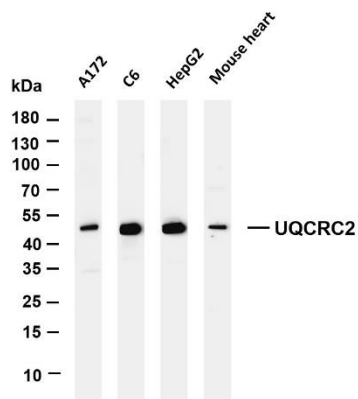
Target Information

Gene name	UQCRC2
Protein Name	Cytochrome b-c1 complex subunit 2, mitochondrial (Complex III subunit 2) (Core protein II) (Ubiquinol-cytochrome-c reductase complex core protein 2)

Organism	Gene ID	UniProt ID
Human	7385	P22695
Mouse	67003	Q9DB77
Rat	293448	P32551

Cellular Localization	Mitochondrion inner membrane
-----------------------	------------------------------

Validation Data



Various whole cell lysates were separated by 4-20% SDS-PAGE, and the membrane was blotted with anti-UQCRC2 antibody. The HRP-conjugated Goat anti-Rabbit IgG(H + L) antibody was used to detect the antibody.

Lane 1: A172

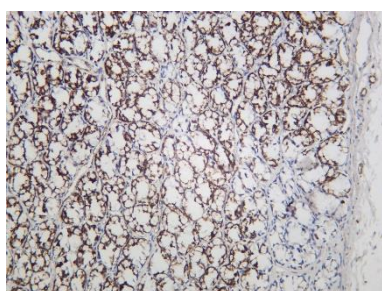
Lane 2: C6

Lane 3: HepG2

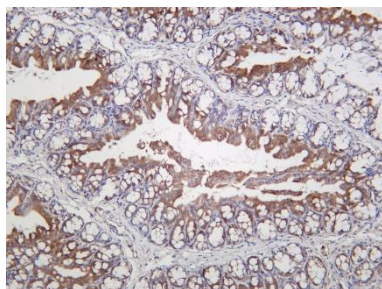
Lane 4: Mouse heart

Predicted band size: 48kDa

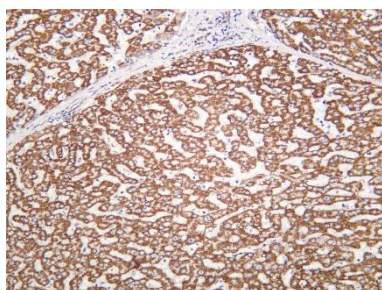
Observed band size: 48kDa



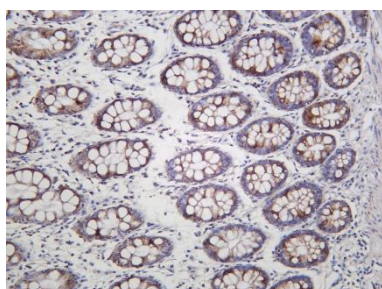
Rat colon was stained with Anti-UQCRC2 rabbit antibody



Mouse colon was stained with Anti-UQCRC2 rabbit antibody



Human liver was stained with Anti-UQCRC2 rabbit antibody



Human colon was stained with Anti-UQCRC2 rabbit antibody