

## METTL3 Rabbit mAb (AR1057)

### Key Features

Host Species:	Rabbit
Reactivity:	Human, Mouse, Rat
Applications:	WB, IHC, IF, IP, ELISA
Isotype:	IgG, Kappa
MW:	64kD (Calculated) 70kD (Observed)

### Recommended Dilution Ratios

IHC:	1:200-400
WB:	1:1000-5000
IF:	1:200-1000
ELISA:	1:5000-20000
IP:	1:50-200

### Storage

-15°C to -25°C/1 year (Do not lower than -25°C)

### Basic Information

Clonality	Monoclonal
-----------	------------

### Immunogen Information

Specificity	Endogenous
-------------	------------

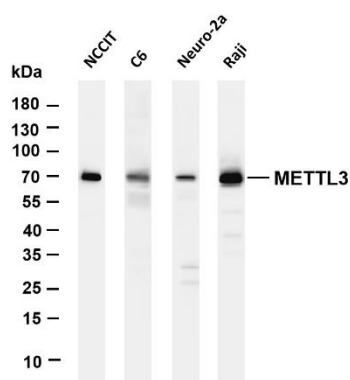
### Target Information

Gene name	METTL3 MTA70
Protein Name	N6-adenosine-methyltransferase 70 kDa subunit (MT-A70) (Methyltransferase-like protein 3)

Organism	Gene ID	UniProt ID
Human	56339	Q86U44
Mouse	56335	Q8C3P7

Cellular Localization	Nucleus
Tissue specificity	Widely expressed at low level. Expressed in spleen, thymus, prostate, testis, ovary, small intestine, colon and peripheral blood leukocytes.

### Validation Data



Various whole cell lysates were separated by 4-20% SDS-PAGE, and the membrane was blotted with anti-METTL3 antibody. The HRP-conjugated Goat anti-Rabbit IgG(H + L) antibody was used to detect the antibody.

Lane 1: NCCIT

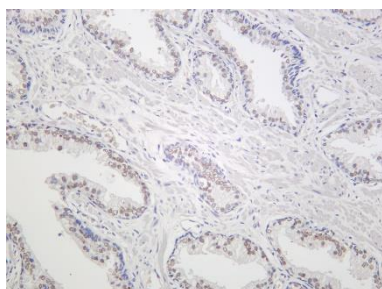
Lane 2: C6

Lane 3: Neuro-2a

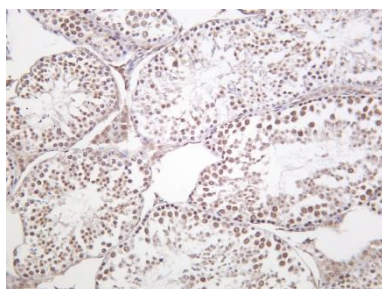
Lane 4: Raji

Predicted band size: 64kDa

Observed band size: 70kDa



Human prostate cancer was stained with Anti-METTL3 rabbit antibody



Mouse testis was stained with Anti-METTL3 rabbit antibody

For Research Use Only