

NADPH oxidase 4 Rabbit mAb (AR1058)

Key Features

Host Species:	Rabbit
Reactivity:	Human,Mouse,Rat
Applications:	WB,IF,IP,ELISA
Isotype:	IgG,Kappa
MW:	67kD (Calculated) 67kD (Observed)

Recommended Dilution Ratios

WB:	1:1000-5000
IF:	1:200-1000
ELISA:	1:5000-20000
IP:	1:50-200

Storage

-15°C to -25°C/1 year (Do not lower than -25°C)

Basic Information

Clonality	Monoclonal
-----------	------------

Immunogen Information

Specificity	Endogenous
-------------	------------

Target Information

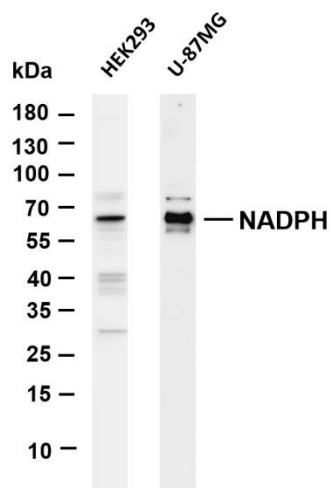
Gene name	NOX4 RENOX
Protein Name	NADPH oxidase 4 (Kidney oxidase-1) (KOX-1) (Kidney superoxide-producing NADPH oxidase) (Renal NAD(P)H-oxidase)

Organism	Gene ID	UniProt ID
Human	50507	Q9NPH5
Mouse		Q9JHI8
Rat		Q924V1

Cellular Localization	Cytoplasm
Tissue specificity	Expressed by distal tubular cells in kidney cortex and in endothelial cells (at protein level). Widely expressed. Strongly expressed in kidney and to a lower extent in heart, adipocytes, hepatoma,

endothelial cells, skeletal muscle, brain, several brain tumor cell lines and airway epithelial cells.

Validation Data



Various whole cell lysates were separated by 4-20% SDS-PAGE, and the membrane was blotted with anti-NADPH antibody. The HRP-conjugated Goat anti-Rabbit IgG (H + L) antibody was used to detect the antibody.

Lane1: HEK293

Lane 2: U-87MG

Predicted band size: 67kDa

Observed band size: 67kDa

For Research Use Only