

# Neuropilin 1 Rabbit mAb (AR1059)

## Key Features

Host Species:	Rabbit
Reactivity:	Human,Mouse,Rat
Applications:	WB,IHC,IF,IP,ELISA
Isotype:	IgG,Kappa
MW:	103kD (Calculated) 135kD (Observed)

## Recommended Dilution Ratios

IHC:	1:200-1000
WB:	1:1000-5000
IF:	1:200-1000
ELISA:	1:5000-20000
IP:	1:50-200

## Storage

-15°C to -25°C/1 year (Do not lower than -25°C)

## Basic Information

Clonality	Monoclonal
-----------	------------

## Immunogen Information

Specificity	Endogenous
-------------	------------

## Target Information

Gene name	NRP1
Protein Name	Neuropilin-1

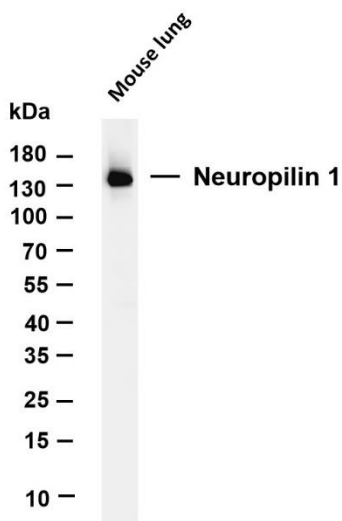
Organism	Gene ID	UniProt ID
Human	8829	O14786
Mouse	18186	P97333
Rat	246331	Q9QWJ9

Cellular Localization	Cytoplasmic, Membranous
-----------------------	-------------------------

Tissue specificity	[Isoform 1]: The expression of isoforms 1 and 2 does not seem to overlap. Expressed by the blood vessels of different tissues. In the
--------------------	---

developing embryo it is found predominantly in the nervous system. In adult tissues, it is highly expressed in heart and placenta; moderately in lung, liver, skeletal muscle, kidney and pancreas; and low in adult brain (PubMed:10688880, PubMed:9529250). Expressed in olfactory epithelium (at protein level) (PubMed:33082293). Expressed in the central nervous system, including olfactory related regions such as the olfactory tubercles and paraolfactory gyri (PubMed:33082293); [Isoform 2]: The expression of isoforms 1 and 2 does not seem to overlap. Found in liver hepatocytes, kidney distal and proximal tubules.

## Validation Data

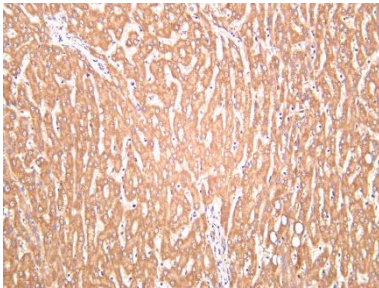


Various whole cell lysates were separated by 4-20% SDS-PAGE, and the membrane was blotted with anti-Neuropilin 1 antibody. The HRP-conjugated Goat anti-Rabbit IgG (H + L) antibody was used to detect the antibody.

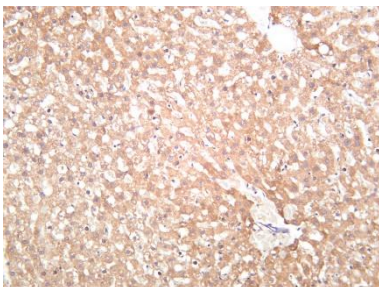
Lane 1: Mouse lung

Predicted band size: 103kDa

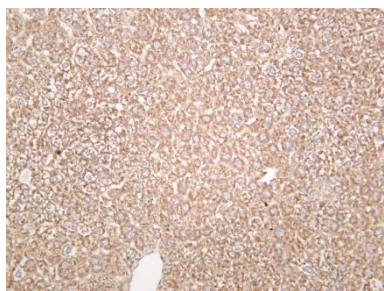
Observed band size: 135kDa



Human liver was stained with Anti-Neuropilin 1 rabbit antibody



Rat liver was stained with anti-Neuropilin 1 rabbit antibody



Mouse liver was stained with anti-Neuropilin 1 rabbit antibody

For Research Use Only