

Lactate Dehydrogenase Rabbit mAb (AR1060)

Key Features

Host Species:	Rabbit
Reactivity:	Human, Mouse, Rat
Applications:	WB, IHC, IF, IP, ELISA
Isotype:	IgG, Kappa
MW:	37kD (Calculated) 37kD (Observed)

Recommended Dilution Ratios

IHC:	1:1000-3000
WB:	1:1000-5000
IF:	1:200-1000
ELISA:	1:5000-20000
IP:	1:50-200

Storage

-15°C to -25°C/1 year (Do not lower than -25°C)

Basic Information

Clonality	Monoclonal
-----------	------------

Immunogen Information

Specificity	Endogenous
-------------	------------

Target Information

Gene name	LDHA; PIG19; LDHB; LDHC; LDH3; LDHX L-lactate dehydrogenase A chain; LDH-A; Cell proliferation-inducing gene 19 protein; LDH muscle subunit; LDH-M; Renal carcinoma antigen NY-REN-59; L-lactate dehydrogenase B chain; LDH-B; LDH heart subunit; LDH-H; Renal carcinoma antigen NY-REN-46; L-lactate dehydrogenase C chain; LDH-C; Cancer/testis antigen 32; CT32; LDH testis subunit; LDH-X
Protein Name	

Organism	Gene ID	UniProt ID
Human	3939	P00338; P07195; P07864
Mouse		P06151

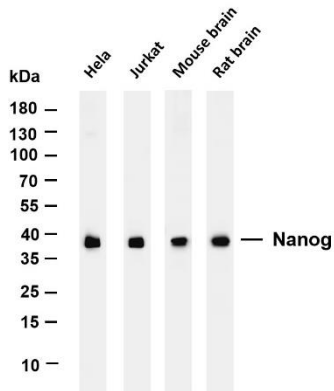
Cellular Localization

Cytoplasmic, Membranous

Tissue specificity

Predominantly expressed in anaerobic tissues such as skeletal muscle and liver.

Validation Data



Various whole cell lysates were separated by 4-20% SDS-PAGE, and the membrane was blotted with anti-Lactate Dehydrogenase antibody. The HRP-conjugated Goat anti-Rabbit IgG (H + L) antibody was used to detect the antibody.

Lane 1: HeLa

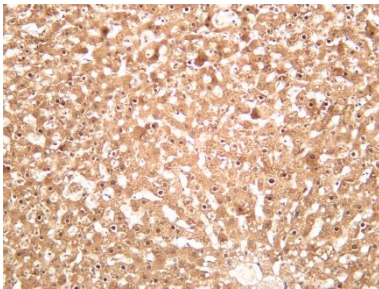
Lane 2: Jurkat

Lane 3: Mouse brain

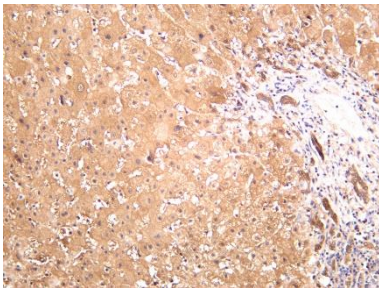
Lane 4: Rat brain

Predicted band size: 37kDa

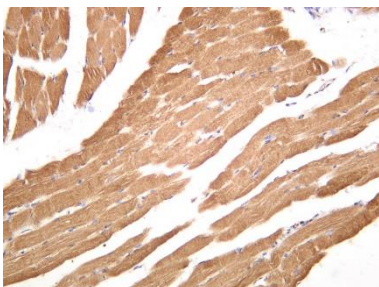
Observed band size: 37kDa



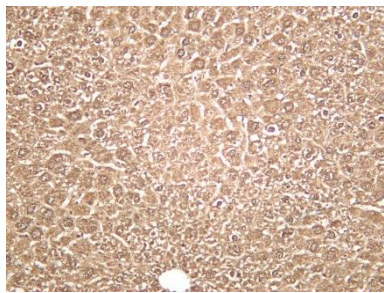
Rat liver was stained with anti-Lactate Dehydrogenase rabbit antibody



Human liver was stained with anti-Lactate Dehydrogenase rabbit antibody



Human skeletal muscle was stained with anti-Lactate Dehydrogenase rabbit antibody



Mouse liver was stained with anti-Lactate Dehydrogenase rabbit antibody

For Research Use Only