

EEA1 Rabbit mAb (AR1061)

Key Features

Host Species:	Rabbit
Reactivity:	Human, Mouse, Rat
Applications:	WB, IHC, IF, IP, ELISA
Isotype:	IgG, Kappa
MW:	162kD (Calculated) 162kD (Observed)

Recommended Dilution Ratios

IHC:	1:100-200
WB:	1:1000-5000
IF:	1:200-1000
ELISA:	1:5000-20000
IP:	1:50-200

Storage

-15°C to -25°C/1 year (Do not lower than -25°C)

Basic Information

Clonality	Monoclonal
-----------	------------

Immunogen Information

Specificity	Endogenous
-------------	------------

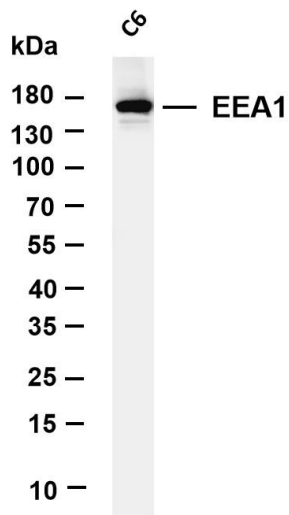
Target Information

Gene name	EEA1
Protein Name	Early endosome antigen 1

Organism	Gene ID	UniProt ID
Human	8411	Q15075
Mouse	216238	Q8BL66

Cellular Localization	Cytoplasm
Tissue specificity	Aorta, Cervix carcinoma, Fetal brain cortex, Skeletal muscle

Validation Data

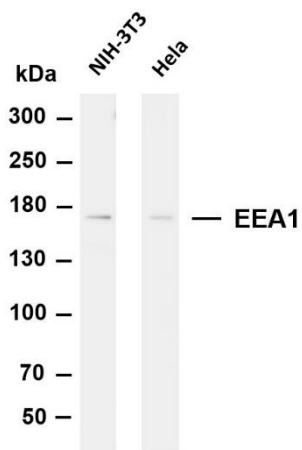


Various whole cell lysates were separated by 4-20% SDS-PAGE, and the membrane was blotted with anti-EEA1 antibody. The HRP-conjugated Goat anti-Rabbit IgG(H + L) antibody was used to detect the antibody.

Lane 1: C6

Predicted band size: 162kDa

Observed band size: 162kDa



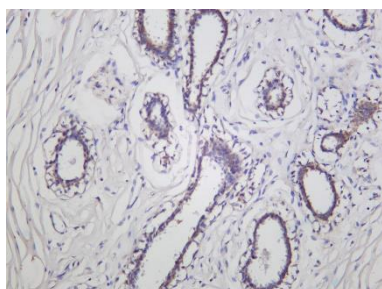
Various whole cell lysates were separated by 4-8% SDS-PAGE, and the membrane was blotted with anti-EEA1 antibody. The HRP-conjugated Goat anti-Rabbit IgG(H + L) antibody was used to detect the antibody.

Lane 1: NIH-3T3

Lane 2: HeLa

Predicted band size: 162kDa

Observed band size: 162kDa



Human ductal breast carcinoma was stained with Anti-EEA1 rabbit antibody

For Research Use Only