

Hexokinase II Rabbit mAb (AR1062)

Key Features

Host Species:	Rabbit
Reactivity:	Human, Mouse, Rat
Applications:	WB, IHC, IF, IP, ELISA
Isotype:	IgG, Kappa
MW:	102kD (Calculated) 102kD (Observed)

Recommended Dilution Ratios

IHC:	1:200-400
WB:	1:1000-5000
IF:	1:200-1000
ELISA:	1:5000-20000
IP:	1:50-200

Storage

-15°C to -25°C/1 year (Do not lower than -25°C)

Basic Information

Clonality	Monoclonal
-----------	------------

Immunogen Information

Specificity	Endogenous
-------------	------------

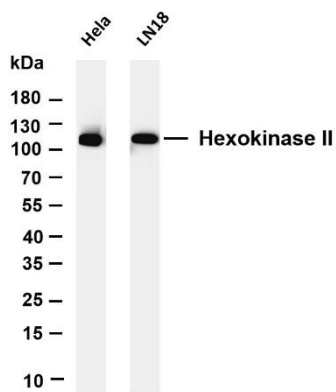
Target Information

Gene name	HK2
Protein Name	Hexokinase-2

Organism	Gene ID	UniProt ID
Human	3099	P52789
Mouse	15277	O08528
Rat	25059	P27881

Cellular Localization	Cytoplasm
Tissue specificity	Predominant hexokinase isozyme expressed in insulin-responsive tissues such as skeletal muscle.

Validation Data



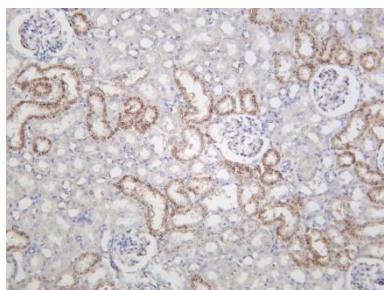
Various whole cell lysates were separated by 4-20% SDS-PAGE, and the membrane was blotted with anti-Hexokinase II antibody. The HRP-conjugated Goat anti-Rabbit IgG (H + L) antibody was used to detect the antibody.

Lane 1: HeLa

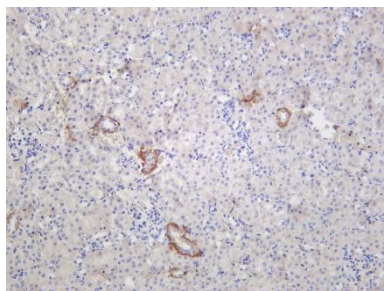
Lane 2: LN18

Predicted band size: 102kDa

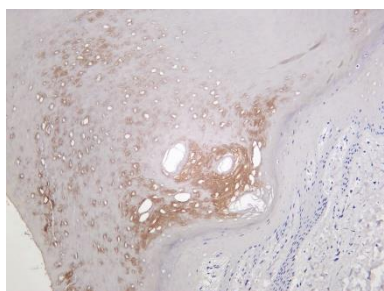
Observed band size: 102kDa



Rat kidney was stained with Anti-Hexokinase II rabbit antibody



Mouse kidney was stained with Anti-Hexokinase II rabbit antibody



Human skin was stained with Anti-Hexokinase II rabbit antibody

For Research Use Only