

EAAT1 Rabbit mAb (AR1064)

Key Features

Host Species:	Rabbit
Reactivity:	Human,Mouse,Rat
Applications:	WB,IHC,IF,IP,ELISA
Isotype:	IgG,Kappa
MW:	60kD (Calculated) 60kD (Observed)

Recommended Dilution Ratios

IHC:	1:200-1000
WB:	1:500-2000
IF:	1:200-1000
ELISA:	1:5000-20000
IP:	1:50-200

Storage

-15°C to -25°C/1 year (Do not lower than -25°C)

Basic Information

Clonality	Monoclonal
-----------	------------

Immunogen Information

Specificity	Endogenous
-------------	------------

Target Information

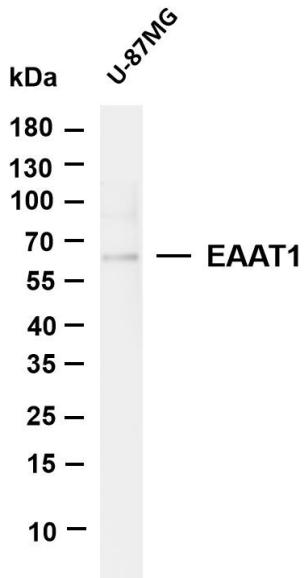
Gene name	SLC1A3
Protein Name	Excitatory amino acid transporter 1

Organism	Gene ID	UniProt ID
Human	6507	P43003
Mouse		P56564

Cellular Localization	Cell membrane
Tissue specificity	Detected in brain (PubMed:8218410, PubMed:7521911, PubMed:8123008). Detected at very much lower levels in heart, lung, placenta and skeletal muscle (PubMed:7521911, PubMed:8123008). Highly expressed in cerebellum, but also found in frontal cortex,

hippocampus and basal ganglia (PubMed:7521911).

Validation Data

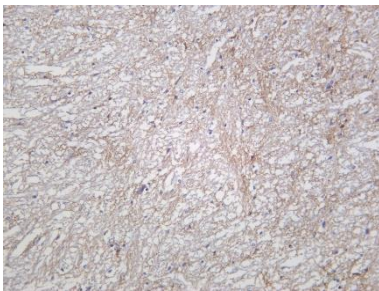


Various whole cell lysates were separated by 4-20% SDS-PAGE, and the membrane was blotted with anti-EAAT1 antibody. The HRP-conjugated Goat anti-Rabbit IgG (H + L) antibody was used to detect the antibody.

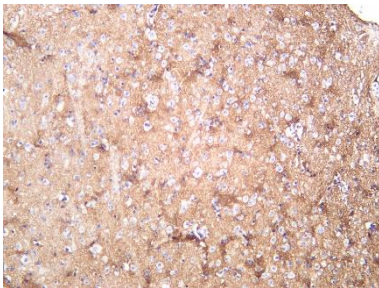
Lane 1: U-87MG

Predicted band size: 60kDa

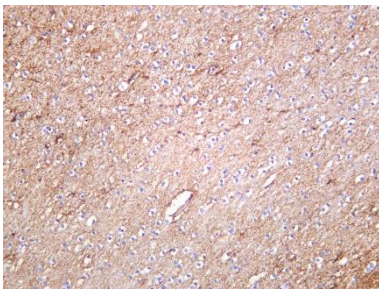
Observed band size: 60kDa



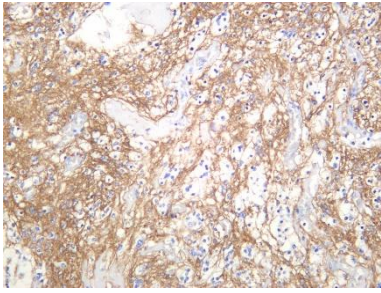
Rat brain was stained with Anti-EAAT1 rabbit antibody



Mouse brain was stained with Anti-EAAT1 rabbit antibody



Human brain was stained with Anti-EAAT1 rabbit antibody



Human glioma was stained with anti-EAAT1 rabbit antibody

For Research Use Only