

Optineurin Rabbit mAb (AR1065)

Key Features

| | |
|---------------|--------------------------------------|
| Host Species: | Rabbit |
| Reactivity: | Human,Mouse,Rat |
| Applications: | WB,IHC,IF,IP,ELISA |
| Isotype: | IgG,Kappa |
| MW: | 67kD (Calculated) 74kD (Observed) |

Recommended Dilution Ratios

| | |
|--------|--------------|
| IHC: | 1:200-1000 |
| WB: | 1:1000-5000 |
| IF: | 1:200-1000 |
| ELISA: | 1:5000-20000 |
| IP: | 1:50-200 |

Storage

-15°C to -25°C/1 year (Do not lower than -25°C)

Basic Information

| | |
|-----------|------------|
| Clonality | Monoclonal |
|-----------|------------|

Immunogen Information

| | |
|-------------|------------|
| Specificity | Endogenous |
|-------------|------------|

Target Information

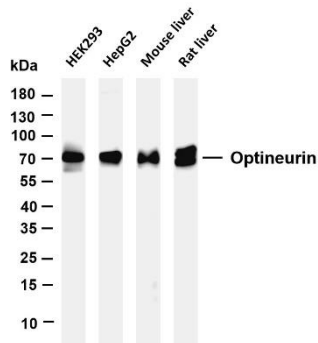
| | |
|--------------|-------------------------------|
| Gene name | OPTN FIP2 GLC1E HIP7 HYPL NRP |
| Protein Name | OPTN |

| Organism | Gene ID | UniProt ID |
|----------|---------|------------|
| Human | 10133 | Q96CV9 |
| Mouse | 71648 | Q8K3K8 |
| Rat | 246294 | Q8R5M4 |

| | |
|-----------------------|---|
| Cellular Localization | Cytoplasm |
| Tissue specificity | Present in aqueous humor of the eye (at protein level). Highly expressed in trabecular meshwork. Expressed nonpigmented ciliary |

epithelium, retina, brain, adrenal cortex, fetus, lymphocyte, fibroblast, skeletal muscle, heart, liver, brain and placenta.

Validation Data



Various whole cell lysates were separated by 4-20% SDS-PAGE, and the membrane was blotted with anti-Optineurin antibody. The HRP conjugated Goat anti-Rabbit IgG(H + L) antibody was used to detect the antibody.

Lane 1: HEK293

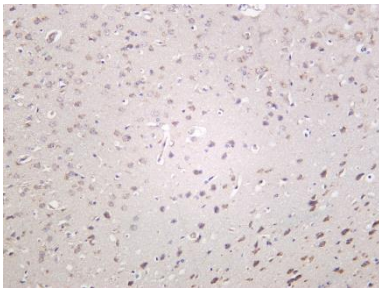
Lane 2: HepG2

Lane 3: Mouse liver

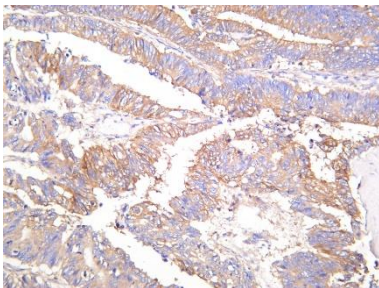
Lane 4: Rat liver

Predicted band size: 67kDa

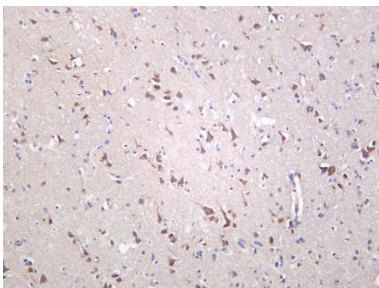
Observed band size: 74kDa



Mouse brain was stained with Anti-Optineurin rabbit antibody



Human colon carcinoma was stained with Anti-Optineurin rabbit antibody



Human brain was stained with Anti-Optineurin rabbit antibody

For Research Use Only