

CDC37 (Phospho Ser13) Rabbit mAb (AR1068)

Key Features

Host Species:	Rabbit
Reactivity:	Human, Mouse, Rat
Applications:	WB, IHC, IF, IP, ELISA
Isotype:	IgG, Kappa
MW:	44kD (Calculated) 44kD (Observed)

Recommended Dilution Ratios

IHC:	1:400-1000
WB:	1:1000-5000
IF:	1:200-1000
ELISA:	1:5000-20000
IP:	1:50-200

Storage

-15°C to -25°C/1 year (Do not lower than -25°C)

Basic Information

Clonality	Monoclonal
-----------	------------

Immunogen Information

Specificity	This antibody detects endogenous levels of CDC37 only when phosphorylated at Ser13.
-------------	---

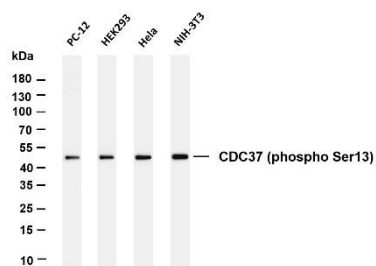
Target Information

Gene name	CDC37
Protein Name	Hsp90 co-chaperone Cdc37

Organism	Gene ID	UniProt ID
Human	11140	Q16543
Mouse	12539	Q61081
Rat	114562	Q63692

Cellular Localization	Cytoplasm
Tissue specificity	Lymph, Placenta

Validation Data



Various whole cell lysates were separated by 4-20% SDS-PAGE, and the membrane was blotted with anti-CDC37 (phospho Ser13) antibody. The HRP-conjugated Goat anti-Rabbit IgG (H + L) antibody was used to detect the antibody.

Lane 1: PC-12

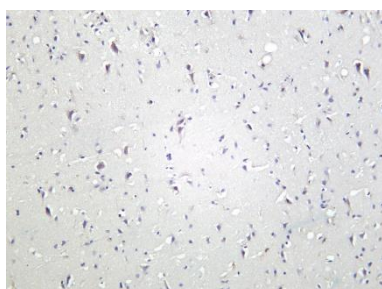
Lane 2: HEK293

Lane 3: HeLa

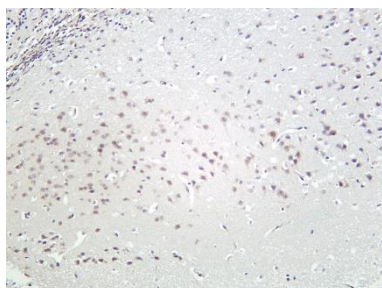
Lane 4: NIH-3T3

Predicted band size: 44kDa

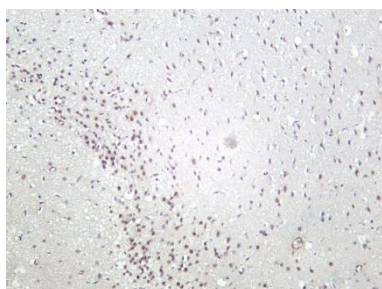
Observed band size: 44kDa



Human brain was stained with Anti-CDC37 rabbit antibody



Mouse brain was stained with Anti-CDC37 rabbit antibody



Rat brain was stained with Anti-CDC37 (phospho Ser13) rabbit antibody

For Research Use Only