

β-actin Rabbit mAb (AR1146)

Key Features

Host Species:	Rabbit
Reactivity:	Human, Mouse, Rat
Applications:	WB, ELISA
Isotype:	IgG, Kappa
MW:	42kD (Calculated) 42kD (Observed)

Recommended Dilution Ratios

WB:	1:500-5000
ELISA:	1:20000

Storage

-15°C to -25°C/1 year (Do not lower than -25°C)

Basic Information

Clonality	Monoclonal
-----------	------------

Immunogen Information

Specificity	Endogenous
-------------	------------

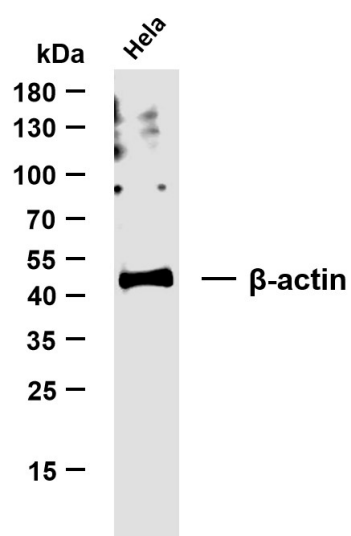
Target Information

Gene name	ACTB
Protein Name	Actin cytoplasmic 1

Organism	Gene ID	UniProt ID
Human	60	P60709
Mouse	11461	P60710
Rat	81822	P60711

Cellular Localization	Cytoplasm, cytoskeleton. Nucleus. Localized in cytoplasmic mRNP granules containing untranslated mRNAs.
Tissue specificity	B-cell lymphoma, Brain, Cajal-Retzius cell, Eye, Fetal brain cortex, Foreskin, Hepatocellular car.

Validation Data



Whole cell lysates were separated by 10% SDS-PAGE, and the membrane was blotted with anti- β -actin antibody. The HRP-conjugated Goat anti-Rabbit IgG(H + L) antibody was used to detect the antibody.

Lane 1: Hela

Predicted band size: 42kDa

Observed band size: 42kDa

For Research Use Only