

GCLM Rabbit mAb (AR1069)

Key Features

Host Species:	Rabbit
Reactivity:	Human,Mouse,Rat
Applications:	WB,IHC,IF,IP,ELISA
Isotype:	IgG,Kappa
MW:	31kD (Calculated) 31kD (Observed)

Recommended Dilution Ratios

IHC:	1:200-500
WB:	1:1000-5000
IF:	1:200-1000
ELISA:	1:5000-20000
IP:	1:50-200

Storage

-15°C to -25°C/1 year (Do not lower than -25°C)

Basic Information

Clonality	Monoclonal
-----------	------------

Immunogen Information

Specificity	Endogenous
-------------	------------

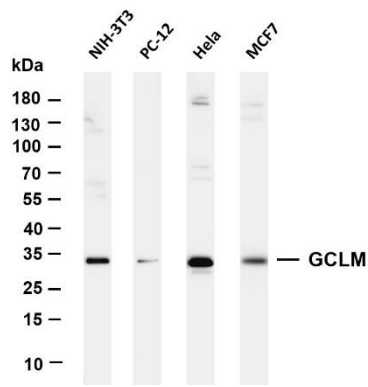
Target Information

Gene name	GCLM
Protein Name	Glutamate--cysteine ligase regulatory subunit

Organism	Gene ID	UniProt ID
Human	2730	P48507
Mouse	14630	O09172
Rat	29739	P48508

Cellular Localization	Cytoplasm
Tissue specificity	In all tissues examined. Highest levels in skeletal muscle.

Validation Data



Various whole cell lysates were separated by 4-20% SDS-PAGE, and the membrane was blotted with anti-GCLM antibody. The HRP-conjugated Goat anti-Rabbit IgG (H + L) antibody was used to detect the antibody.

Lane 1: NIH-3T3

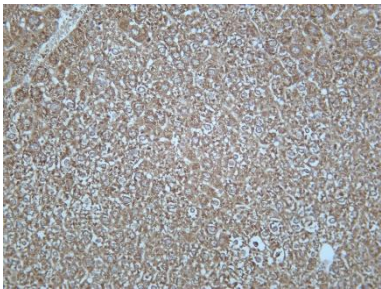
Lane 2: PC-12

Lane 3: HeLa

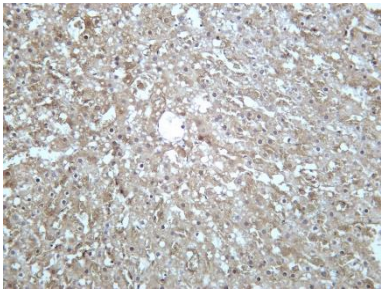
Lane 4: MCF7

Predicted band size: 31kDa

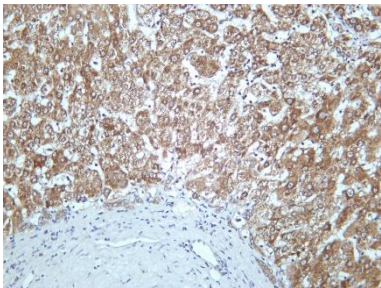
Observed band size: 31kDa



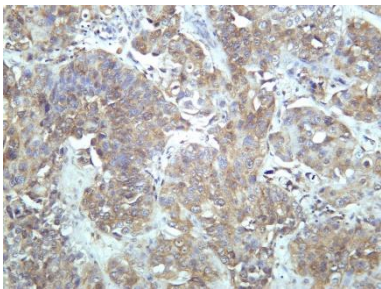
Mouse liver was stained with Anti-GCLM rabbit antibody



Rat liver was stained with Anti-GCLM rabbit antibody



Human liver was stained with Anti-GCLM rabbit antibody



Human bladder carcinoma was stained with Anti-GCLM rabbit antibody