

# Clathrin Heavy Chain 1 Rabbit mAb (AR1070)

## Key Features

Host Species:	Rabbit
Reactivity:	Human,Mouse,Rat
Applications:	WB,IHC,IF,ELISA
Isotype:	IgG,Kappa
MW:	192kD (Calculated) 180kD (Observed)

## Recommended Dilution Ratios

IHC:	1:50-200
WB:	1:500-2000
IF:	1:200-1000
ELISA:	1:5000-20000

## Storage

-15°C to -25°C/1 year (Do not lower than -25°C)

## Basic Information

Clonality	Monoclonal
-----------	------------

## Immunogen Information

Specificity	Endogenous
-------------	------------

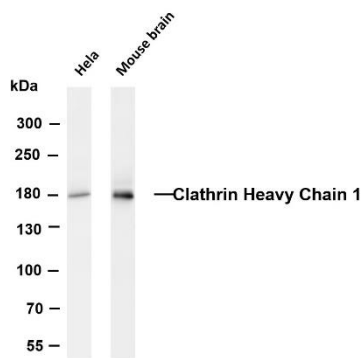
## Target Information

Gene name	CLTC CLH17 CLTCL2 KIAA0034
Protein Name	Clathrin heavy chain 1 (Clathrin heavy chain on chromosome 17) (CLH-17)

Organism	Gene ID	UniProt ID
Human	1213	Q00610

Cellular Localization	Cytoplasm
Tissue specificity	Bone marrow, Brain, Cervix carcinoma, Colon, Epithelium, Fetal kidney, Hepatoma, Mammary c

## Validation Data



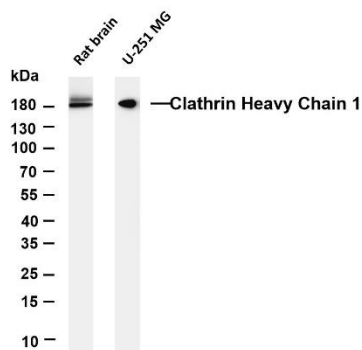
Various whole cell lysates were separated by 4-8% SDS-PAGE, and the membrane was blotted with anti-Clathrin Heavy Chain 1 antibody. The HRP-conjugated Goat anti-Rabbit IgG (H + L) antibody was used to detect the antibody.

Lane 1: HeLa

Lane 2: Mouse brain

Predicted band size: 192kDa

Observed band size: 180kDa



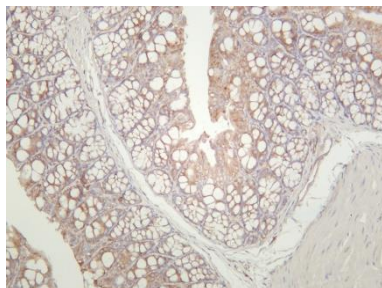
Various whole cell lysates were separated by 4-20% SDS-PAGE, and the membrane was blotted with anti-Clathrin Heavy Chain 1 antibody. The HRP-conjugated Goat anti-Rabbit IgG (H + L) antibody was used to detect the antibody.

Lane 1: Rat brain

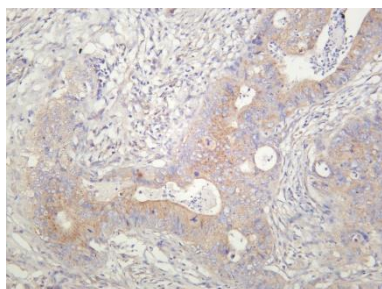
Lane 2: U-251 MG

Predicted band size: 192kDa

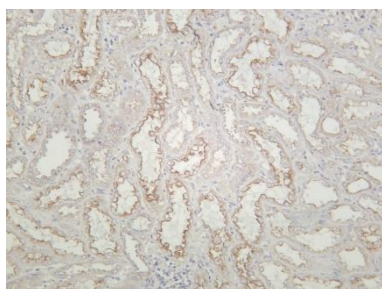
Observed band size: 180kDa



Mouse colon was stained with anti-Clathrin Heavy Chain 1 rabbit antibody



Human colon carcinoma was stained with anti-Clathrin Heavy Chain 1 rabbit antibody



Human kidney was stained with anti-Clathrin Heavy Chain 1 rabbit antibody