

CTGF Rabbit mAb (AR1072)

Key Features

Host Species:	Rabbit
Reactivity:	Human,Mouse,Rat
Applications:	WB,IP,ELISA
Isotype:	IgG,Kappa
MW:	38kD (Calculated) 38kD (Observed)

Recommended Dilution Ratios

WB:	1:500-2000
ELISA:	1:5000-20000
IP:	1:50-200

Storage

-15°C to -25°C/1 year (Do not lower than -25°C)

Basic Information

Clonality	Monoclonal
-----------	------------

Immunogen Information

Specificity	Endogenous
-------------	------------

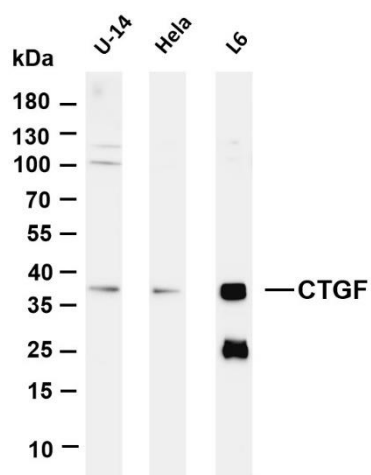
Target Information

Gene name	CTGF CCN2 HCS24 IGFBP8
Protein Name	Connective tissue growth factor (CCN family member 2) (Hypertrophic chondrocyte-specific protein 24) (Insulin-like growth factor-binding protein 8) (IBP-8) (IGF-binding protein 8) (IGFBP-8)

Organism	Gene ID	UniProt ID
Human	1490	P29279
Mouse	14219	P29268
Rat		Q9R1E9

Cellular Localization	Secreted
Tissue specificity	Expressed in bone marrow and thymic cells. Also expressed one of two Wilms tumors tested.

Validation Data



Various whole cell lysates were separated by 4-20% SDS-PAGE, and the membrane was blotted with anti-CTGF antibody. The HRP-conjugated Goat anti-Rabbit IgG (H + L) antibody was used to detect the antibody.

Lane 1: U-14

Lane 2: HeLa

Lane 3: L6

Predicted band size: 38kDa

Observed band size: 38kDa

For Research Use Only