

Polycomb Protein SUZ12 Rabbit mAb (AR1073)

Key Features

Host Species:	Rabbit
Reactivity:	Human,Mouse,Rat
Applications:	WB,IHC,IF,IP,ELISA
Isotype:	IgG,Kappa
MW:	83kD (Calculated) 83kD (Observed)

Recommended Dilution Ratios

IHC:	1:200-1000
WB:	1:1000-5000
IF:	1:200-1000
ELISA:	1:5000-20000
IP:	1:50-200

Storage

-15°C to -25°C/1 year (Do not lower than -25°C)

Basic Information

Clonality	Monoclonal
-----------	------------

Immunogen Information

Specificity	Endogenous
-------------	------------

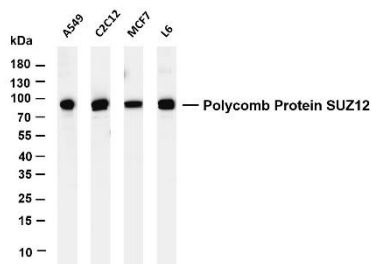
Target Information

Gene name	SUZ12
Protein Name	Polycomb protein SUZ12

Organism	Gene ID	UniProt ID
Human	23512	Q15022
Mouse		Q80U70

Cellular Localization	Nucleus
Tissue specificity	Overexpressed in breast and colon cancer.

Validation Data



Various whole cell lysates were separated by 4-20% SDS-PAGE, and the membrane was blotted with anti-Polycomb Protein SUZ12 antibody. The HRP-conjugated Goat anti-Rabbit IgG (H + L) antibody was used to detect the antibody.

Lane 1: A549

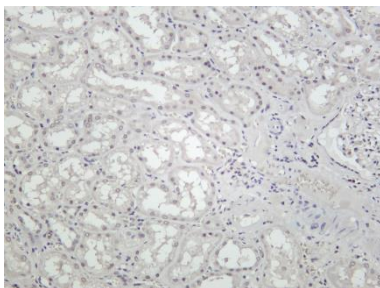
Lane 2: C2C12

Lane 3: MCF7

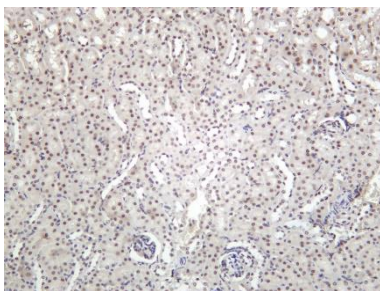
Lane 4: L6

Predicted band size: 83kDa

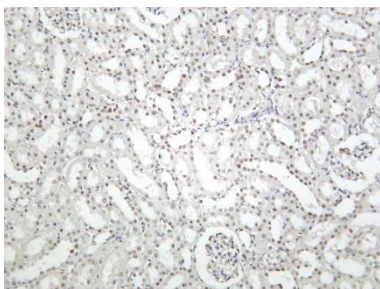
Observed band size: 83kDa



Human kidney was stained with Anti-Polycomb Protein SUZ12 rabbit antibody



Mouse kidney was stained with Anti-Polycomb Protein SUZ12 rabbit antibody



Rat kidney was stained with Anti-Polycomb Protein SUZ12 rabbit antibody

For Research Use Only