

Prohibitin Rabbit mAb (AR1074)

Key Features

Host Species:	Rabbit
Reactivity:	Human,Mouse,Rat
Applications:	WB,IHC,IF,IP,ELISA
Isotype:	IgG,Kappa
MW:	30kD (Calculated) 30kD (Observed)

Recommended Dilution Ratios

IHC:	1:200-1000
WB:	1:1000-5000
IF:	1:200-1000
ELISA:	1:5000-20000
IP:	1:50-200

Storage

-15°C to -25°C/1 year (Do not lower than -25°C)

Basic Information

Clonality	Monoclonal
-----------	------------

Immunogen Information

Specificity	Endogenous
-------------	------------

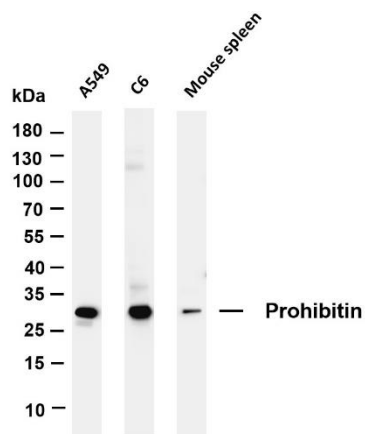
Target Information

Gene name	PHB
Protein Name	Prohibitin

Organism	Gene ID	UniProt ID
Human	5245	P35232
Mouse	18673	P67778
Rat	25344	P67779

Cellular Localization	Cytoplasm
Tissue specificity	Widely expressed in different tissues.

Validation Data



Various whole cell lysates were separated by 4-20% SDS-PAGE, and the membrane was blotted with anti-Prohibitin antibody. The HRP-conjugated Goat anti-Rabbit IgG (H + L) antibody was used to detect the antibody.

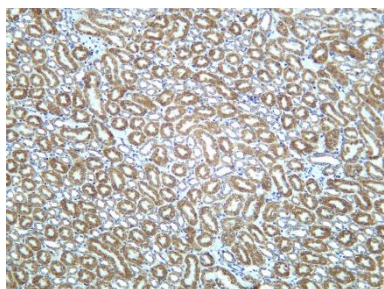
Lane 1: A549

Lane 2: C6

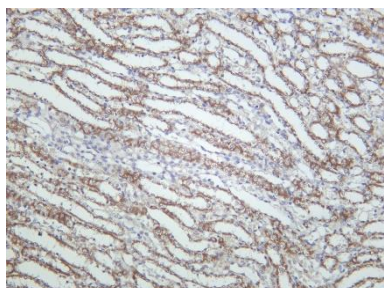
Lane 3: Mouse spleen

Predicted band size: 30kDa

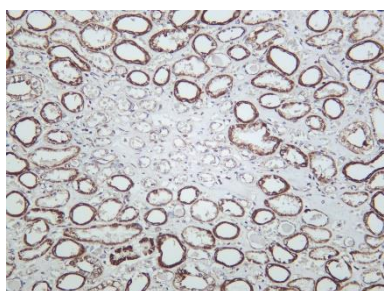
Observed band size: 30kDa



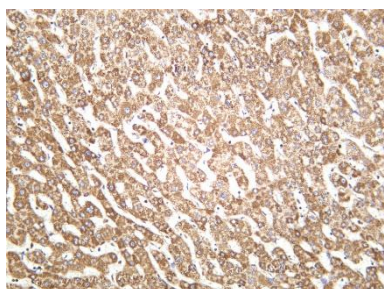
Mouse kidney was stained with Anti-Prohibitin rabbit antibody



Rat kidney was stained with Anti-Prohibitin rabbit antibody



Human kidney was stained with Anti-Prohibitin rabbit antibody



Human liver was stained with Anti-Prohibitin rabbit antibody