

Ctip2 Rabbit mAb (AR1076)

Key Features

Host Species:	Rabbit
Reactivity:	Human,Mouse,Rat
Applications:	WB,IHC,IF,IP,ELISA
Isotype:	IgG,Kappa
MW:	96kD (Calculated) 96kD (Observed)

Recommended Dilution Ratios

IHC:	1:200-1000
WB:	1:1000-5000
IF:	1:200-1000
ELISA:	1:5000-20000
IP:	1:50-200

Storage

-15°C to -25°C/1 year (Do not lower than -25°C)

Basic Information

Clonality	Monoclonal
-----------	------------

Immunogen Information

Specificity	Endogenous
-------------	------------

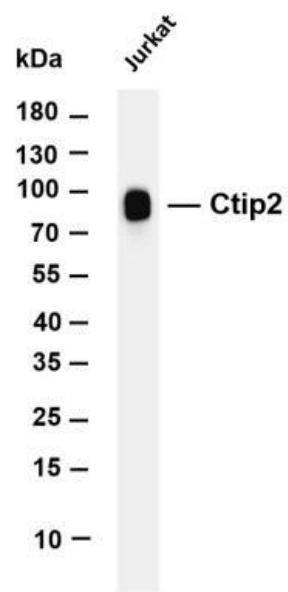
Target Information

Gene name	BCL11B CTIP2 RIT1
Protein Name	B-cell lymphoma/leukemia 11B (BCL-11B) (B-cell CLL/lymphoma 11B) (COUP-TF-interacting protein 2) (Radiation-induced tumor suppressor gene 1 protein) (hRit1)

Organism	Gene ID	UniProt ID
Human	64919	Q9C0K0
Mouse		Q99PV8

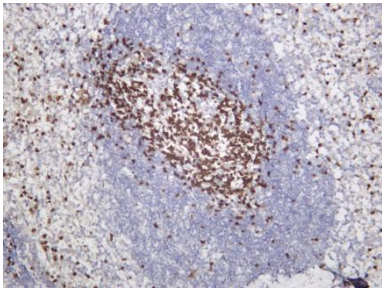
Cellular Localization	Nucleus
Tissue specificity	Highly expressed in brain and in malignant T-cell lines derived from patients with adult T- cell leukemia/lymphoma.

Validation Data

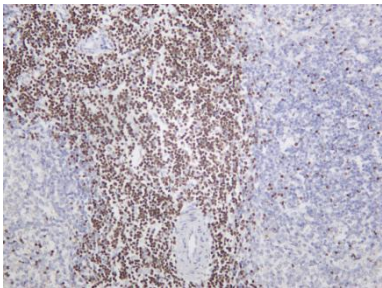


Various whole cell lysates were separated by 4-20% SDS-PAGE, and the membrane was blotted with anti-Ctip2 antibody. The HRP-conjugated Goat anti-Rabbit IgG(H + L) antibody was used to detect the antibody.

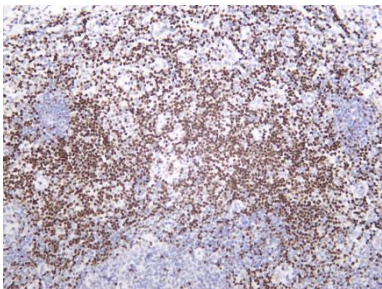
Lane 1: Jurkat
Predicted band size: 96kDa
Observed band size: 96kDa



Mouse spleen was stained with anti-Ctip2 rabbit antibody



Rat spleen was stained with anti-Ctip2 rabbit antibody



Human tonsil was stained with anti-Ctip2 rabbit antibody