

# TATA Box Binding Protein Rabbit mAb (AR1075)

## Key Features

Host Species:	Rabbit
Reactivity:	Human,Mouse,Rat
Applications:	WB,IHC,IF,IP,ELISA
Isotype:	IgG,Kappa
MW:	38kD (Calculated) 38kD (Observed)

## Recommended Dilution Ratios

IHC:	1:400-1000
WB:	1:1000-5000
IF:	1:200-1000
ELISA:	1:5000-20000
IP:	1:50-200

## Storage

-15°C to -25°C/1 year (Do not lower than -25°C)

## Basic Information

Clonality	Monoclonal
-----------	------------

## Immunogen Information

Specificity	Endogenous
-------------	------------

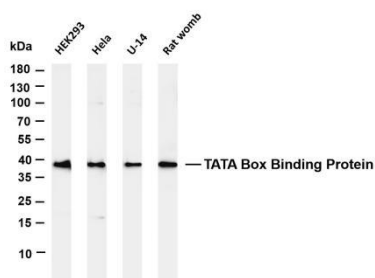
## Target Information

Gene name	TBP
Protein Name	TATA-box-binding protein (TATA sequence-binding protein) (TATA-binding factor) (TATA-box factor) (Transcription initiation factor TFIID TBP subunit)

Organism	Gene ID	UniProt ID
Human	6908	P20226
Mouse		P29037

Cellular Localization	Nucleus
Tissue specificity	Widely expressed, with levels highest in the testis and ovary.

## Validation Data



Various whole cell lysates were separated by 4-20% SDS-PAGE, and the membrane was blotted with anti-TATA Box Binding Protein antibody. The HRP-conjugated Goat anti-Rabbit IgG(H + L) antibody was used to detect the antibody.

Lane 1: HEK293

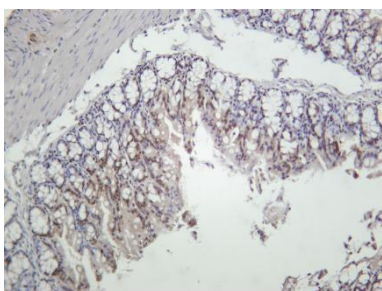
Lane 2: Hela

Lane 3: U-14

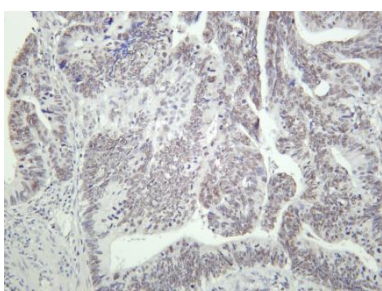
Lane 4: Rat womb

Predicted band size: 38kDa

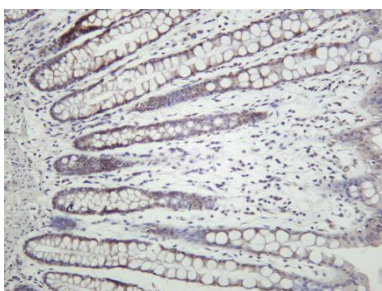
Observed band size: 38kDa



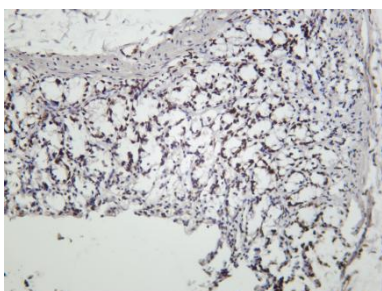
Mouse colon was stained with Anti-TATA Box Binding Protein rabbit antibody



Human colon carcinoma was stained with Anti-TATA Box Binding Protein rabbit antibody



Human colon was stained with Anti-TATA Box Binding Protein rabbit antibody



Rat colon was stained with Anti-TATA Box Binding Protein rabbit antibody