

FOXO1A Rabbit mAb (AR1078)

Key Features

| | |
|---------------|--------------------------------------|
| Host Species: | Rabbit |
| Reactivity: | Human,Mouse |
| Applications: | WB,IHC,IF,IP,ELISA |
| Isotype: | IgG,Kappa |
| MW: | 70kD (Calculated) 75kD (Observed) |

Recommended Dilution Ratios

| | |
|--------|--------------|
| IHC: | 1:400-1000 |
| WB: | 1:1000-5000 |
| IF: | 1:200-1000 |
| ELISA: | 1:5000-20000 |
| IP: | 1:50-200 |

Storage

-15°C to -25°C/1 year (Do not lower than -25°C)

Basic Information

| | |
|-----------|------------|
| Clonality | Monoclonal |
|-----------|------------|

Immunogen Information

| | |
|-------------|------------|
| Specificity | Endogenous |
|-------------|------------|

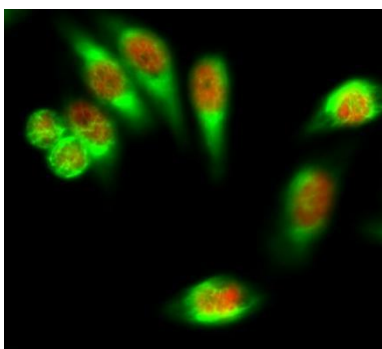
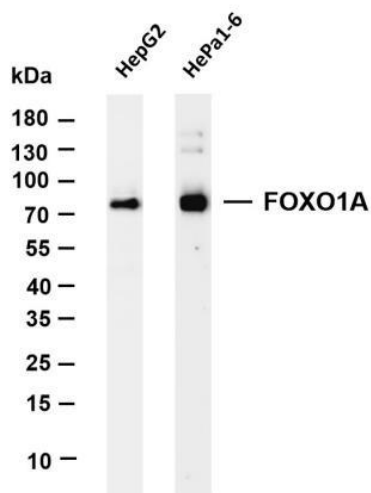
Target Information

| | |
|--------------|-------------------------|
| Gene name | FOXO1 |
| Protein Name | Forkhead box protein O1 |

| Organism | Gene ID | UniProt ID |
|----------|---------|------------|
| Human | 2308 | Q12778; |
| Mouse | 56458 | Q9R1E0 |
| Rat | 84482 | G3V7R4 |

| | |
|-----------------------|-------------|
| Cellular Localization | Nucleus |
| Tissue specificity | Ubiquitous. |

Validation Data



Various whole cell lysates were separated by 4-20% SDS-PAGE, and the membrane was blotted with anti-FOXO1A antibody. The HRP conjugated Goat anti-Rabbit IgG(H + L) antibody was used to detect the antibody.

Lane 1: HepG2

Lane 2: HePa1-6

Predicted band size: 70kDa

Observed band size: 75kDa

Immunofluorescence analysis of Hela cell.

1. FoxO1 Antibody(red) was diluted at 1:200(4° overnight). CK7 Monoclonal Antibody(12D7)(green) was diluted at 1:200(4 ° overnight).
2. Goat Anti Rabbit Alexa Fluor 594 was diluted at 1:1000(room temperature, 50min). Goat Anti Mouse Alexa Fluor 488 was diluted at 1:1000(room temperature, 50min).

For Research Use Only