

c-Myc Rabbit mAb (AR1080)

Key Features

Host Species:	Rabbit
Reactivity:	Human,Mouse,Rat
Applications:	WB,IHC,IF,IP,ELISA
Isotype:	IgG,Kappa
MW:	50kD (Calculated) 60kD (Observed)

Recommended Dilution Ratios

IHC:	1:200-1000
WB:	1:1000-5000
IF:	1:200-1000
ELISA:	1:5000-20000
IP:	1:50-200

Storage

-15°C to -25°C/1 year (Do not lower than -25°C)

Basic Information

Clonality	Monoclonal
-----------	------------

Immunogen Information

Specificity	Endogenous
-------------	------------

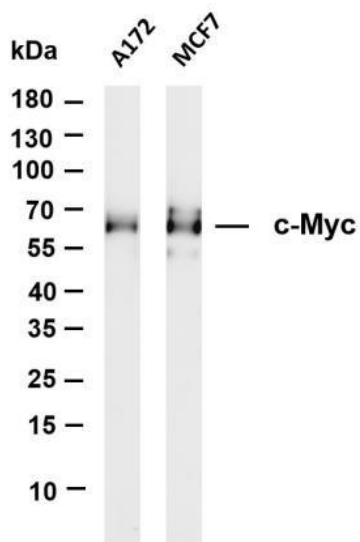
Target Information

Gene name	MYC BHLHE39
Protein Name	Myc proto-oncogene protein (Class E basic helix-loop-helix protein 39) (bHLHe39) (Protooncogene c-Myc) (Transcription factor p64)

Organism	Gene ID	UniProt ID
Human	4609	P01106
Mouse	17869	P01108
Rat	24577	P09416

Cellular Localization	Nucleus
-----------------------	---------

Validation Data



Various whole cell lysates were separated by 4-20% SDS-PAGE, and the membrane was blotted with anti-c-Myc antibody.

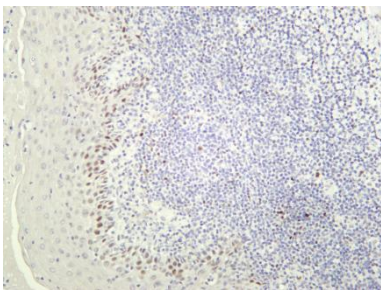
The HRP conjugated Goat anti-Rabbit IgG(H + L) antibody was used to detect the antibody.

Lane 1: A172

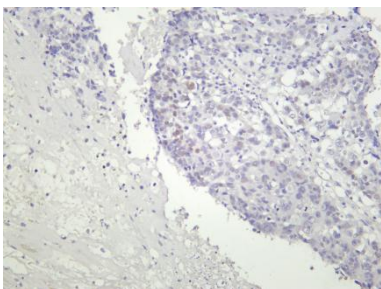
Lane 2: MCF7

Predicted band size: 50kDa

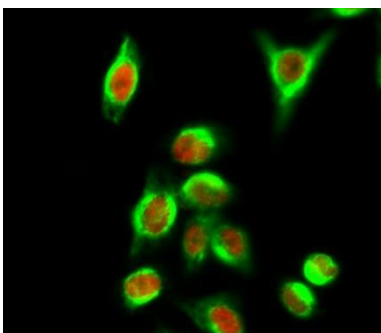
Observed band size: 60kDa



Human tonsil was stained with Anti-c-Myc rabbit antibody



Human lung was stained with Anti-c-Myc rabbit antibody



Immunofluorescence analysis of HeLa cell.

1. c-Myc Antibody(red) was diluted at 1:200(4° overnight). CYCS Monoclonal Antibody(4B10)(green) was diluted at 1:200(4° overnight).
2. Goat Anti Rabbit Alexa Fluor 594 was diluted at 1:1000(room temperature, 50min). Goat Anti Mouse Alexa Fluor 488 was diluted at 1:1000(room temperature, 50min).

For Research Use Only