

Notch1 Rabbit mAb (AR1081)

Key Features

Host Species:	Rabbit
Reactivity:	Human,Mouse,Rat
Applications:	WB,IHC,IF,IP,ELISA
Isotype:	IgG,Kappa
MW:	273kD (Calculated) 120kD (Observed)

Recommended Dilution Ratios

IHC:	1:200-1000
WB:	1:1000-5000
IF:	1:200-1000
ELISA:	1:5000-20000
IP:	1:50-200

Storage -15°C to -25°C/1 year (Do not lower than -25°C)

Basic Information

Clonality Monoclonal

Immunogen Information

Specificity Endogenous

Target Information

Gene name NOTCH1
 Protein Name Neurogenic locus notch homolog protein 1

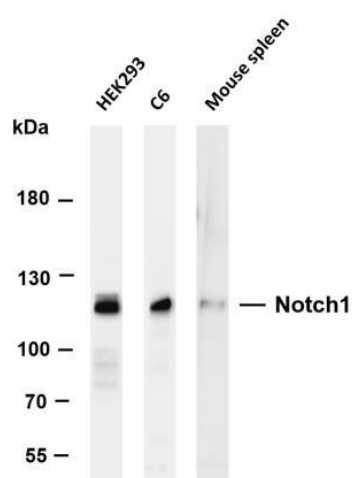
Organism	Gene ID	UniProt ID
Human	4851	P46531
Mouse	18128	Q01705
Rat		Q07008

Cellular Localization Membranous

Tissue specificity In fetal tissues most abundant in spleen, brain stem and lung. Also present in most adult tissues where it is found mainly in lymphoid

tissues.

Validation Data



Various whole cell lysates were separated by 6% SDS-PAGE, and the membrane was blotted with anti-Notch1 antibody. The HRP conjugated Goat anti-Rabbit IgG(H + L) antibody was used to detect the antibody.

Lane 1: HEK293

Lane 2: C6

Lane 3: Mouse spleen

Predicted band size: 273kDa

Observed band size: 120kDa

For Research Use Only