

KDM1A Rabbit mAb (AR1083)

Key Features

Host Species:	Rabbit
Reactivity:	Human,Mouse,Rat
Applications:	WB,IHC,IF,IP,ELISA
Isotype:	IgG,Kappa
MW:	93kD (Calculated) 110kD (Observed)

Recommended Dilution Ratios

IHC:	1:200-1000
WB:	1:1000-5000
IF:	1:200-1000
ELISA:	1:5000-20000
IP:	1:50-200

Storage

-15°C to -25°C/1 year (Do not lower than -25°C)

Basic Information

Clonality	Monoclonal
-----------	------------

Immunogen Information

Specificity	Endogenous
-------------	------------

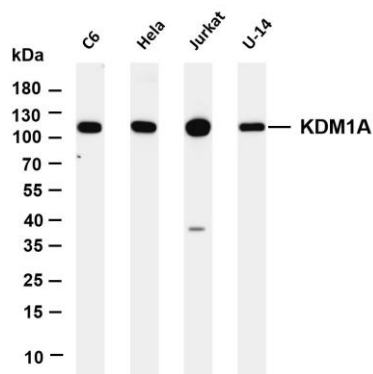
Target Information

Gene name	KDM1A AOF2 KDM1 KIAA0601 LSD1
Protein Name	LSD1 (Ser131)

	Organism	Gene ID	UniProt ID
	Human	23028	O60341
	Mouse	99982	Q6ZQ88

Cellular Localization	Nucleus
Tissue specificity	Ubiquitously expressed.

Validation Data



Various whole cell lysates were separated by 4-20% SDS-PAGE, and the membrane was blotted with anti-KDM1A antibody. The HRP conjugated Goat anti-Rabbit IgG(H + L) antibody was used to detect the antibody.

Lane 1: C6

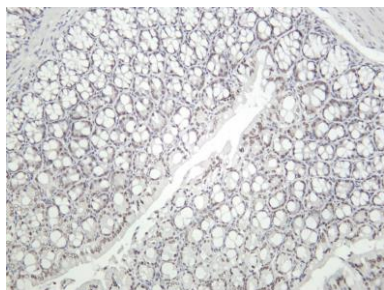
Lane 2: HeLa

Lane 3: Jurkat

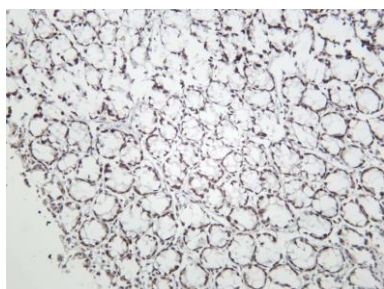
Lane 4: U-14

Predicted band size: 93kDa

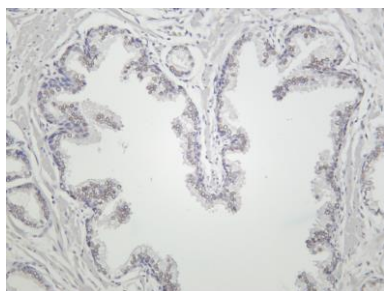
Observed band size: 110kDa



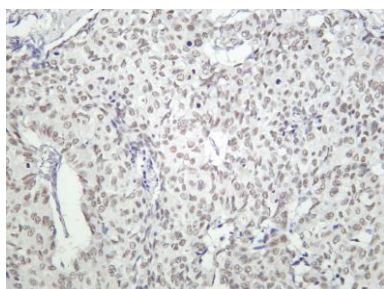
Mouse colon was stained with Anti-KDM1A rabbit antibody



Rat colon was stained with Anti-KDM1A rabbit antibody



Human prostate was stained with Anti-KDM1A rabbit antibody



Human prostate carcinoma was stained with Anti-KDM1A rabbit antibody

For Research Use Only