

AREB6 Rabbit mAb (AR1084)

Key Features

Host Species:	Rabbit
Reactivity:	Human,Rat
Applications:	WB,IHC,IF,IP,ELISA
Isotype:	IgG,Kappa
MW:	124kD (Calculated) 200kD (Observed)

Recommended Dilution Ratios

IHC:	1:200-500
WB:	1:1000-5000
IF:	1:200-1000
ELISA:	1:5000-20000
IP:	1:50-200

Storage -15°C to -25°C/1 year (Do not lower than -25°C)

Basic Information

Clonality Monoclonal

Immunogen Information

Specificity Endogenous

Target Information

Gene name ZEB1 AREB6 TCF8

Protein Name Zinc finger E-box-binding homeobox 1 (N1L-2-A zinc finger protein)
(Negative regulator of IL2) (Transcription factor 8) (TCF-8)

Organism	Gene ID	UniProt ID
Human	6935	P37275
Mouse		Q64318
Rat		Q62947

Cellular Localization Nucleus

Tissue specificity Colocalizes with SMARCA4/BRG1 in E-cadherin-negative cells from

established lines, and stroma of normal colon as well as in de-differentiated epithelial cells at the invasion front of colorectal carcinomas (at protein level). Expressed in heart and skeletal muscle, but not in liver, spleen, or pancreas.

Validation Data



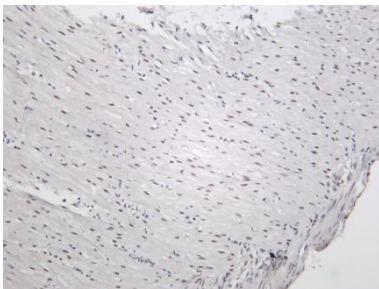
Various whole cell lysates were separated by 4-8% SDS-PAGE, and the membrane was blotted with anti-ZEB1 antibody. The HRP conjugated Goat anti-Rabbit IgG(H + L) antibody was used to detect the antibody.

Lane 1: A459

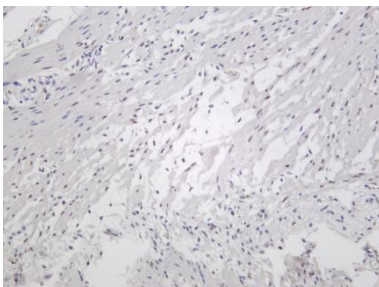
Lane 2: Hela

Predicted band size: 124kDa

Observed band size: 200kDa



Rat colon was stained with Anti-ZEB1 rabbit antibody



Human colon was stained with Anti-ZEB1 rabbit antibody

For Research Use Only