

# Cyclin D1 Rabbit mAb (AR1087)

## Key Features

Host Species:	Rabbit
Reactivity:	Human,Mouse,Rat
Applications:	WB,IHC,IF,IP,ELISA
Isotype:	IgG,Kappa
MW:	34kD (Calculated) 36kD (Observed)

## Recommended Dilution Ratios

IHC	1:200-1000
WB:	1:1000-5000
IF:	1:200-1000
ELISA:	1:5000-20000
IP:	1:50-200

**Storage** -15°C to -25°C/1 year (Do not lower than -25°C)

## Basic Information

Clonality Monoclonal

## Immunogen Information

Specificity Endogenous

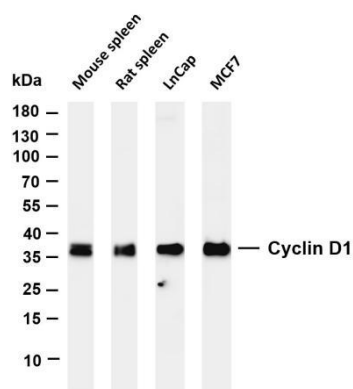
## Target Information

Gene name CCND1  
 Protein Name G1/S-specific cyclin-D1

Organism	Gene ID	UniProt ID
Human	595	P24385
Mouse	12443	P25322
Rat	58919	P39948

Cellular Localization Nucleus  
 Tissue specificity Brain, Placenta, Tongue

## Validation Data



Various whole cell lysates were separated by 4-20% SDS-PAGE, and the membrane was blotted with anti-Cyclin D1 antibody. The HRP conjugated Goat anti-Rabbit IgG(H + L) antibody was used to detect the antibody.

Lane 1: Mouse spleen

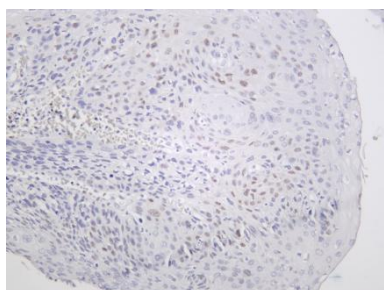
Lane 2: Rat spleen

Lane 3: LnCap

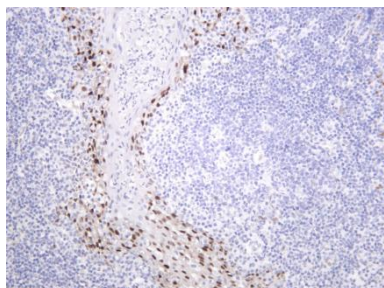
Lane 4: MCF7

Predicted band size: 34kDa

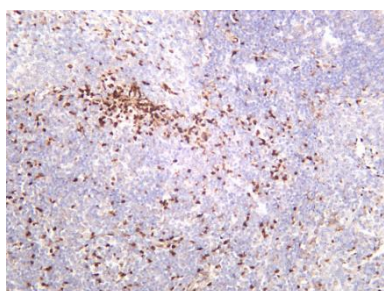
Observed band size: 36kDa



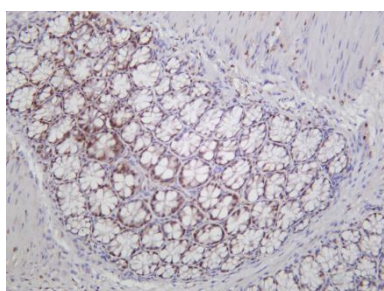
Human esophagus was stained with anti-Cyclin D1 rabbit antibody



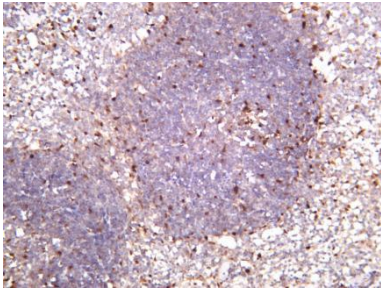
Human tonsil was stained with anti-Cyclin D1 rabbit antibody



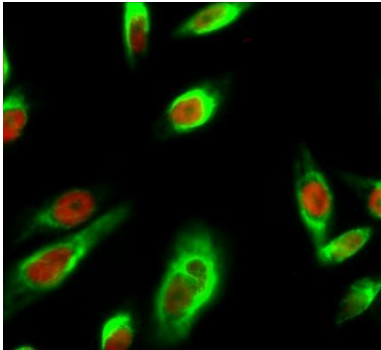
Rat spleen was stained with anti-Cyclin D1 rabbit antibody



Mouse colon was stained with anti-Cyclin D1 rabbit antibody



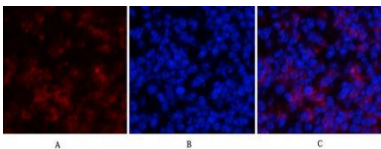
Mouse spleen was stained with anti-Cyclin D1 rabbit antibody



Immunofluorescence analysis of HeLa cell.

1. Cyclin D1 Antibody(red) was diluted at 1:200(4° overnight). GAPDH Monoclonal Antibody(2B8)(green) was diluted at 1:200(4° overnight).
2. Goat Anti Rabbit Alexa Fluor 594 was diluted at 1:1000(room temperature, 50min). Goat Anti Mouse Alexa Fluor 488 was diluted at 1:1000(room temperature, 50min).

Immunofluorescence analysis of mouse-spleen tissue.



1. Cyclin D1 Antibody(red) was diluted at 1:200(4°C, overnight).
2. Cy3 labeled Secondary antibody was diluted at 1:300(room temperature, 50min).
3. DAPI (blue) 10min.

Picture A: Target. Picture B: DAPI. Picture C: merge of A+B

For Research Use Only