

## p21 Rabbit mAb (AR1086)

### Key Features

Host Species:	Rabbit
Reactivity:	Human,Rat
Applications:	WB,IHC,IF,IP,ELISA
Isotype:	IgG,Kappa
MW:	18kD (Calculated) 18kD (Observed)

### Recommended Dilution Ratios

IHC	1:100-200
WB:	1:1000-5000
IF:	1:200-1000
ELISA:	1:5000-20000
IP:	1:50-200

### Storage

-15°C to -25°C/1 year (Do not lower than -25°C)

### Basic Information

Clonality	Monoclonal
-----------	------------

### Immunogen Information

Specificity	Endogenous
-------------	------------

### Target Information

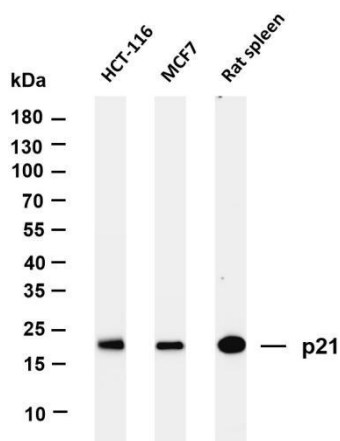
Gene name	CDKN1A CAP20 CDKN1 CIP1 MDA6 PIC1 SDI1 WAF1
Protein Name	p21

Organism	Gene ID	UniProt ID
Human	1026	P38936
Mouse	12575	P39689

Cellular Localization	Nucleus
-----------------------	---------

Tissue specificity	Expressed in all adult tissues, with 5-fold lower levels observed in the brain.
--------------------	---------------------------------------------------------------------------------

## Validation Data



Various whole cell lysates were separated by 4-20% SDS-PAGE, and the membrane was blotted with anti-p21 antibody. The HRP conjugated Goat anti-Rabbit IgG(H + L) antibody was used to detect the antibody.

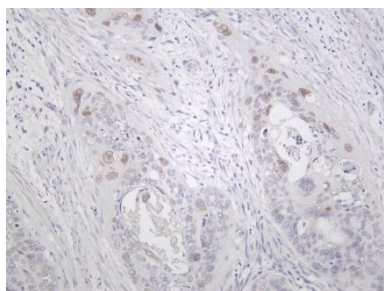
Lane 1: HCT-116

Lane 2: MCF7

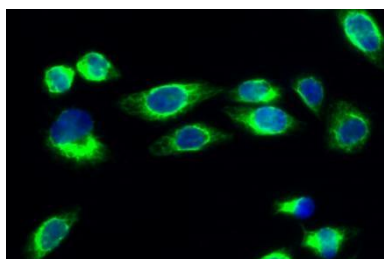
Lane 3: Rat spleen

Predicted band size: 18kDa

Observed band size: 18kDa



Human cervical carcinoma was stained with anti-p21 rabbit antibody



Immunofluorescence analysis of HeLa cell.

1. p21 Antibody(green) was diluted at 1:200(4° overnight).
2. Goat Anti Rabbit Alexa Fluor 488 was diluted at 1:1000(room temperature, 50min).
3. DAPI (blue) 10min.

For Research Use Only