

Neurofilament heavy polypeptide

Rabbit mAb (AR1090)

Key Features

Host Species:	Rabbit
Reactivity:	Human,Mouse,Rat
Applications:	WB,IHC,IF,IP,ELISA
Isotype:	IgG,Kappa
MW:	111kD (Calculated) 180-200kD (Observed)

Recommended Dilution Ratios

IHC	1:200-1000
WB:	1:1000-5000
IF:	1:200-1000
ELISA:	1:5000-20000
IP:	1:50-200

Storage

-15°C to -25°C/1 year (Do not lower than -25°C)

Basic Information

Clonality	Monoclonal
-----------	------------

Immunogen Information

Specificity	Endogenous
-------------	------------

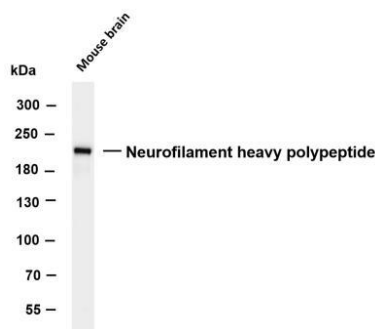
Target Information

Gene name	NEFH
Protein Name	Brain, Eye, Testis

Organism	Gene ID	UniProt ID
Human	4744	P12036;
Mouse		P19246

Cellular Localization	Cytoplasm
Tissue specificity	Brain, Eye, Testis

Validation Data

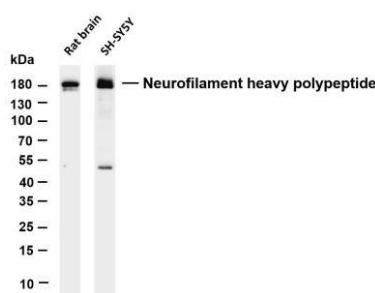


Various whole cell lysates were separated by 4-8% SDS-PAGE, and the membrane was blotted with anti-Neurofilament heavy polypeptide antibody. The HRP-conjugated Goat anti-Rabbit IgG(H + L) antibody was used to detect the antibody.

Lane 1: Mouse brain

Predicted band size: 111kDa

Observed band size: 200kDa



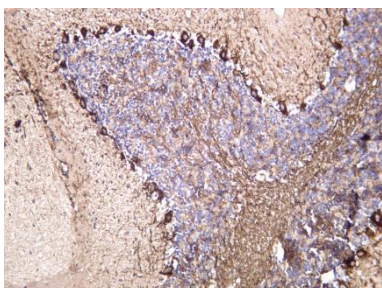
Various whole cell lysates were separated by 4-20% SDS-PAGE, and the membrane was blotted with anti-Neurofilament heavy polypeptide antibody. The HRP-conjugated Goat anti-Rabbit IgG(H + L) antibody was used to detect the antibody.

Lane 1: Rat brain

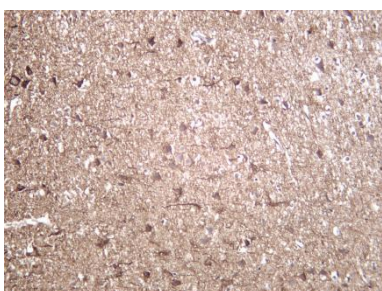
Lane 2: SH-SY5Y

Predicted band size: 111kDa

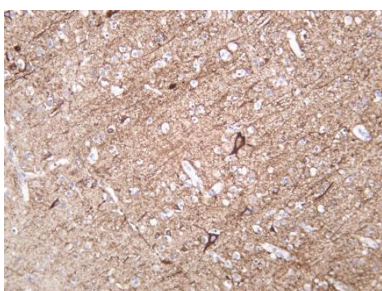
Observed band size: 180kDa



Mouse brain was stained with Anti-Neurofilament heavy polypeptide rabbit antibody



Rat brain was stained with Anti-Neurofilament heavy polypeptide rabbit antibody



Human brain was stained with Anti-Neurofilament heavy polypeptide rabbit antibody

For Research Use Only