

## Calreticulin Rabbit mAb (AR1091)

### Key Features

Host Species:	Rabbit
Reactivity:	Human,Mouse,Rat
Applications:	WB,IHC,IF,IP,ELISA
Isotype:	IgG,Kappa
MW:	48kD (Calculated) 55kD (Observed)

### Recommended Dilution Ratios

IHC	1:200-1000
WB:	1:1000-5000
IF:	1:200-1000
ELISA:	1:5000-20000
IP:	1:50-200

**Storage** -15°C to -25°C/1 year (Do not lower than -25°C)

### Basic Information

Clonality Monoclonal

### Immunogen Information

Specificity Endogenous

### Target Information

Gene name CALR

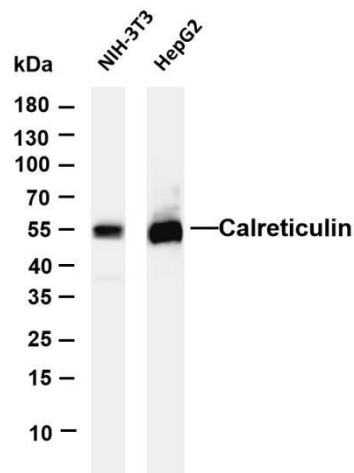
Protein Name Calreticulin

Organism	Gene ID	UniProt ID
Human	811	P27797
Mouse	12317	P14211
Rat	64202	P18418

Cellular Localization Cytoplasm

Tissue specificity Brain, Cajal-Retzius cell, Colon carcinoma, Eye, Fetal brain cortex, Keratinocyte, Liver, Pancreas

Validation Data



Various whole cell lysates were separated by 4-20% SDS-PAGE, and the membrane was blotted with anti-Calreticulin antibody.

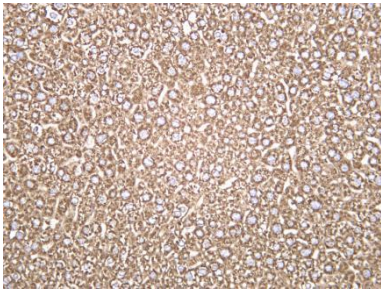
The HRP conjugated Goat anti-Rabbit IgG(H + L) antibody was used to detect the antibody.

Lane 1: NIH-3T3

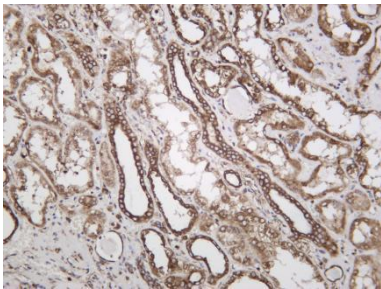
Lane 2: HepG2

Predicted band size: 48kDa

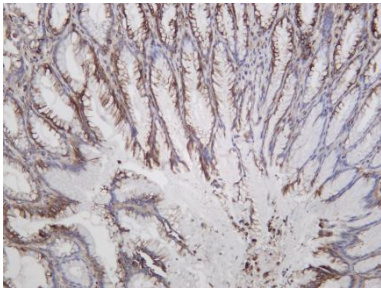
Observed band size: 55kDa



Mouse liver was stained with Anti-Calreticulin rabbit antibody



Human kidney was stained with Anti-Calreticulin rabbit antibody



Human stomach was stained with Anti-Calreticulin rabbit antibody

For Research Use Only