

CD3 Rabbit mAb (AR1092)

Key Features

Host Species:	Rabbit
Reactivity:	Human,Mouse,Rat
Applications:	WB,IHC,IF,IP,ELISA
Isotype:	IgG,Kappa
MW:	23kD (Calculated) 23kD (Observed)

Recommended Dilution Ratios

IHC	1:200-1000
WB:	1:1000-5000
IF:	1:200-1000
ELISA:	1:5000-20000
IP:	1:50-200

Storage -15°C to -25°C/1 year (Do not lower than -25°C)

Basic Information

Clonality Monoclonal

Immunogen Information

Specificity Endogenous

Target Information

Gene name CD3E T3E

Protein Name CD3, CD3E

Organism

Human

Gene ID

916

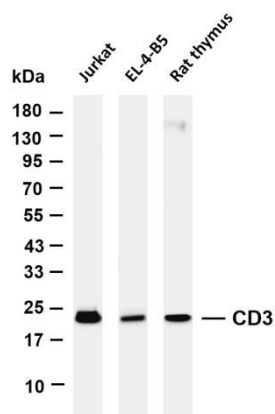
UniProt ID

P07766

Cellular Localization Membranous

Tissue specificity Membranous

Validation Data



Various whole cell lysates were separated by 4-20% SDS-PAGE, and the membrane was blotted with anti-CD3 antibody. The HRP conjugated Goat anti-Rabbit IgG(H + L) antibody was used to detect the antibody.

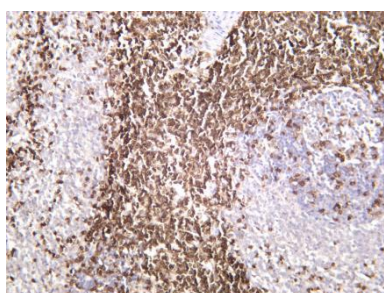
Lane 1: Jurkat

Lane 2: EL-4-B5

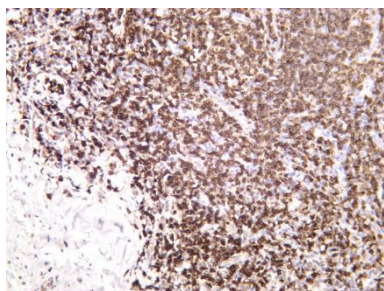
Lane 3: Rat thymus

Predicted band size: 23kDa

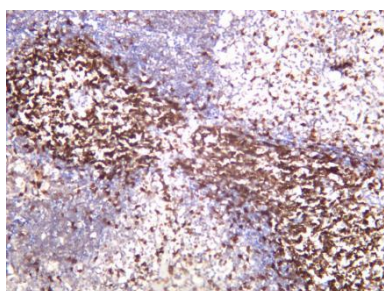
Observed band size: 23kDa



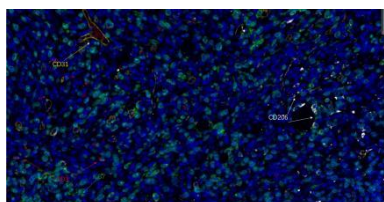
Rat spleen was stained with anti-CD3 rabbit antibody



Human tonsil was stained with anti-CD3 rabbit antibody



Mouse spleen was stained with anti-CD3 rabbit antibody



Fluorescence multiplex immunohistochemical analysis of human tonsil tissue (formalin-fixed paraffin-embedded section). The immunostaining was performed by Sextuple-Fluorescence kit. CD3 rabbit mAb (RED), Ki67 rabbit mAb (GREEN), CD31 rabbit mAb (YELLOW), CD206 Rabbit mAb (WHITE) was tested with different TSA Fluorescence reagent. Microscopy and pseudocoloring of individual dyes was performed using a Slideviewer Imaging System (Excilone).

For Research Use Only