

LRP1 Rabbit mAb (AR1093)

Key Features

Host Species:	Rabbit
Reactivity:	Human,Mouse,Rat
Applications:	WB,IHC,IF,IP,ELISA
Isotype:	IgG,Kappa
MW:	85kD (Calculated) 85kD (Observed)

Recommended Dilution Ratios

IHC	1:200-1000
WB:	1:1000-5000
IF:	1:200-1000
ELISA:	1:5000-20000
IP:	1:50-200

Storage

-15°C to -25°C/1 year (Do not lower than -25°C)

Basic Information

Clonality	Monoclonal
-----------	------------

Immunogen Information

Specificity	Endogenous
-------------	------------

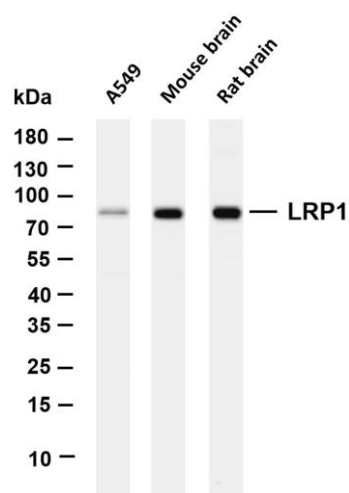
Target Information

Gene name	LRP1
Protein Name	Prolow-density lipoprotein receptor-related protein 1

Organism	Gene ID	UniProt ID
Human	4035	Q07954
Mouse	16971	Q91ZX7

Cellular Localization	Membranous
Tissue specificity	Most abundant in liver, brain and lung

Validation Data



Various whole cell lysates were separated by 4-20% SDS-PAGE, and the membrane was blotted with anti-LRP1 antibody. The HRP conjugated Goat anti-Rabbit IgG(H + L) antibody was used to detect the antibody.

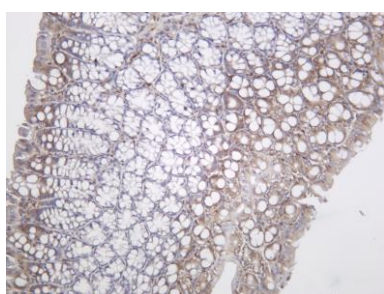
Lane 1: A549

Lane 2: Mouse brain

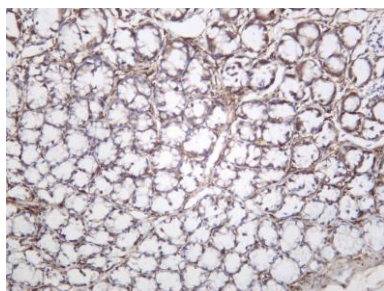
Lane 3: Rat brain

Predicted band size: 85kDa

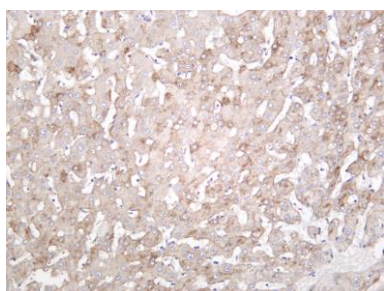
Observed band size: 85kDa



Mouse colon was stained with Anti-LRP1 rabbit antibody



Rat colon was stained with Anti-LRP1 rabbit antibody



Human liver was stained with Anti-LRP1 rabbit antibody

For Research Use Only