

## LC3B Rabbit mAb (AR1094)

### Key Features

Host Species:	Rabbit
Reactivity:	Human,Mouse,Rat
Applications:	WB,IHC,IF,IP,ELISA
Isotype:	IgG,Kappa
MW:	14kD,16kD (Calculated) 14kD,16kD (Observed)

### Recommended Dilution Ratios

IHC	1:200-1000
WB:	1:1000-5000
IF:	1:200-1000
ELISA:	1:5000-20000
IP:	1:50-200

### Storage

-15°C to -25°C/1 year (Do not lower than -25°C)

### Basic Information

Clonality	Monoclonal
-----------	------------

### Immunogen Information

Specificity	Endogenous
-------------	------------

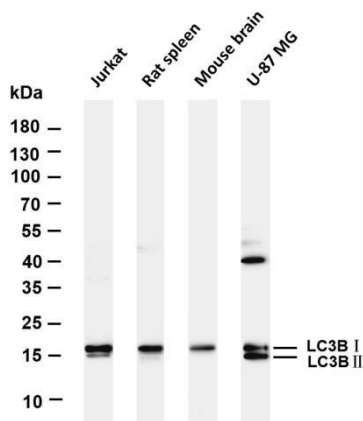
### Target Information

Gene name	MAP1LC3B
Protein Name	Microtubule-associated protein 1 light chain 3 beta

Organism	Gene ID	UniProt ID
Human	81631	Q9GZQ8
Mouse		Q9CQV6

Cellular Localization	Cytoplasm
Tissue specificity	Most abundant in heart, brain, skeletal muscle and testis. Little expression observed in liver.

## Validation Data



Various whole cell lysates were separated by 4-20% SDS-PAGE, and the membrane was blotted with anti-LC3B antibody. The HRP conjugated Goat anti-Rabbit IgG(H + L) antibody was used to detect the antibody.

Lane 1: Jurkat

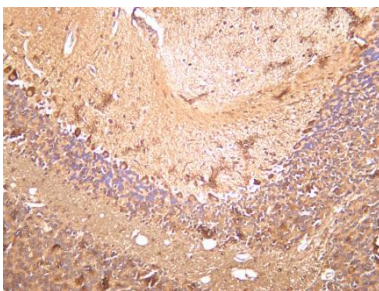
Lane 2: Rat spleen

Lane 3: Mouse brain

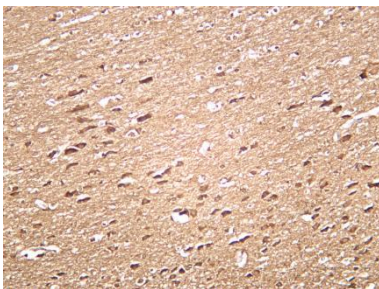
Lane 4: U-87MG

Predicted band size: 14,16kDa

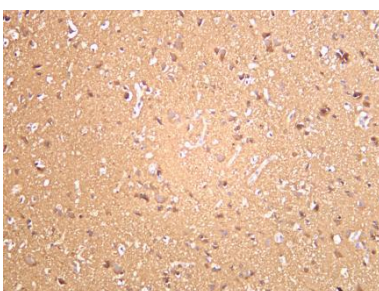
Observed band size: 14,16kDa



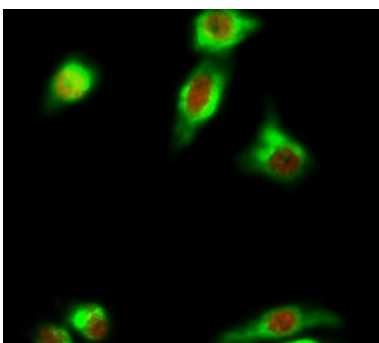
Mouse brain was stained with anti-LC3B rabbit antibody



Rat brain was stained with anti-LC3B rabbit antibody

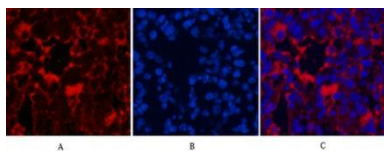


Human brain was stained with anti-LC3B rabbit antibody



Immunofluorescence analysis of HeLa cell.

1. Cleaved-PARP-1 (D214) Antibody(red) was diluted at 1:200(4° overnight). LC3B Antibody(green) was diluted at 1:200(4° overnight).
2. Goat Anti Rabbit Alexa Fluor 594 was diluted at 1:1000(room temperature, 50min). Goat Anti Mouse Alexa Fluor 488 was diluted at 1:1000(room temperature, 50min).



Immunofluorescence analysis of Mouse-lung tissue.

1. LC3B Antibody(red) was diluted at 1:200(4°C, overnight).
2. Cy3 labeled Secondary antibody was diluted at 1:300(room temperature, 50min).
3. DAPI (blue) 10min.

Picture A: Target. Picture B: DAPI. Picture C: merge of A+B

For Research Use Only