

FAK Rabbit mAb (AR1095)

Key Features

Host Species:	Rabbit
Reactivity:	Human,Mouse,Rat
Applications:	WB,IHC,IF,IP,ELISA
Isotype:	IgG,Kappa
MW:	119kD (Calculated) 119kD (Observed)

Recommended Dilution Ratios

IHC	1:400-1000
WB:	1:1000-5000
IF:	1:200-1000
ELISA:	1:5000-20000
IP:	1:50-200

Storage

-15°C to -25°C/1 year (Do not lower than -25°C)

Basic Information

Clonality	Monoclonal
-----------	------------

Immunogen Information

Specificity	Endogenous
-------------	------------

Target Information

Gene name	PTK2
Protein Name	Focal adhesion kinase 1

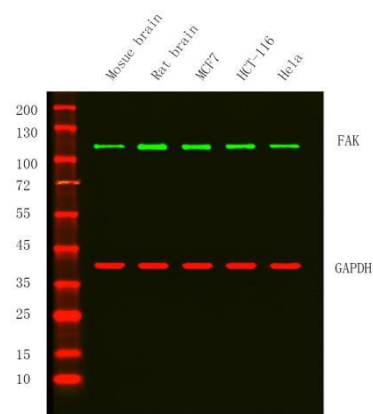
Organism	Gene ID	UniProt ID
Human	5747	Q05397
Mouse	14083	P34152
Rat	25614	O35346

Cellular Localization	Cytoplasm
-----------------------	-----------

Tissue specificity	Detected in B and T-lymphocytes. Isoform 1 and isoform 6 are detected in lung fibroblasts (at protein level). Ubiquitous.
--------------------	---

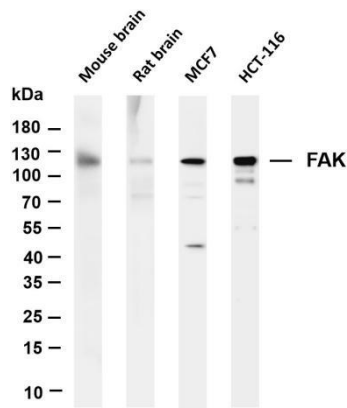
Expressed in epithelial cells (at protein level) (PubMed: 31630787).

Validation Data



Western Blot analysis using Various whole cell lysates were separated by 4-20% SDS-PAGE, and the membrane was blotted with anti-FAK Rabbit mAb diluted at 1:2000.

Loading control: Mouse anti-GAPDH Secondary: Dylight 800, Goat Anti Rabbit IgG(1:10000) Dylight 680, Goat Anti Mouse IgG (1:10000)



Various whole cell lysates were separated by 4-20% SDS-PAGE, and the membrane was blotted with anti-FAK antibody. The HRP conjugated Goat anti-Rabbit IgG(H + L) antibody was used to detect the antibody.

Lane 1: Mouse brain

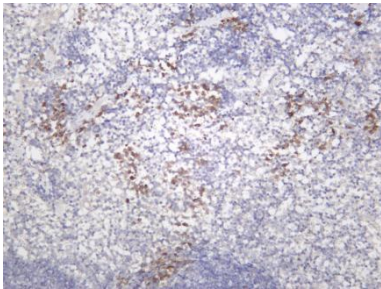
Lane 2: Rat brain

Lane 3: MCF7

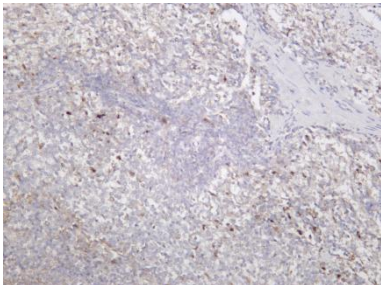
Lane 4: HCT-116

Predicted band size: 119kDa

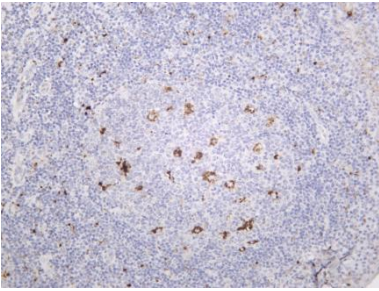
Observed band size: 119kDa



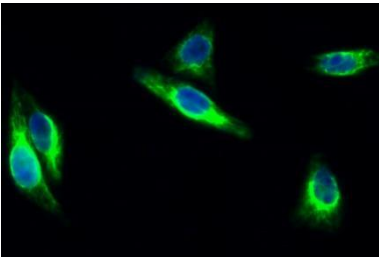
Mouse spleen was stained with Anti-FAK rabbit antibody



Rat spleen was stained with Anti-FAK rabbit antibody



Human tonsil was stained with Anti-FAK rabbit antibody



Immunofluorescence analysis of HeLa cell.

1. FAK Antibody(green) was diluted at 1:200(4° overnight).
2. Goat Anti Rabbit Alexa Fluor 488 was diluted at 1:1000(room temperature, 50min).
3. DAPI (blue) 10min.

For Research Use Only