

Rad51 Rabbit mAb (AR1148)

Key Features

Host Species:	Rabbit
Reactivity:	Human,Mouse,Rat
Applications:	WB,IF,IP,ELISA
Isotype:	IgG,Kappa
MW:	37kD (Calculated) 37kD (Observed)

Recommended Dilution Ratios

WB:	1:1000-5000
IF:	1:200-1000
ELISA:	1:5000-20000
IP:	1:50-200

Storage

-15°C to -25°C/1 year (Do not lower than -25°C)

Basic Information

Clonality	Monoclonal
-----------	------------

Immunogen Information

Specificity	Endogenous
-------------	------------

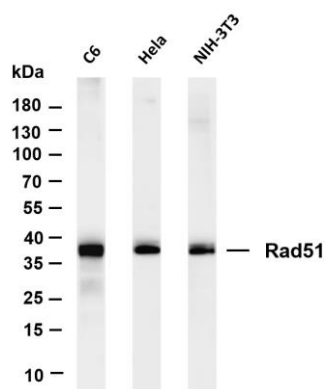
Target Information

Gene name	RAD51
Protein Name	DNA repair protein RAD51 homolog 1

Organism	Gene ID	UniProt ID
Human	5888	Q06609
Mouse	19361	Q08297

Cellular Localization	Cytoplasm, Nucleus
Tissue specificity	Highly expressed in testis and thymus, followed by small intestine, placenta, colon, pancreas and ovary. Weakly expressed in breast.

Validation Data



Various whole cell lysates were separated by 4-20% SDS-PAGE, and the membrane was blotted with anti-Rad51 antibody. The HRP-conjugated Goat anti-Rabbit IgG(H + L) antibody was used to detect the antibody.

Lane 1: C6

Lane 2: HeLa

Lane 3: NIH-3T3

Predicted band size: 37kDa

Observed band size: 37kDa

For Research Use Only