

Fibrillarin Rabbit mAb (AR1063)

Key Features

Host Species:	Rabbit
Reactivity:	Human,Mouse,Rat
Applications:	WB,IHC,IF,IP,ELISA
Isotype:	IgG,Kappa
MW:	34kD (Calculated) 34kD (Observed)

Recommended Dilution Ratios

IHC:	1:200-1000
WB:	1:1000-5000
IF:	1:200-1000
ELISA:	1:5000-20000
IP:	1:50-200

Storage

-15°C to -25°C/1 year (Do not lower than -25°C)

Basic Information

Clonality	Monoclonal
-----------	------------

Immunogen Information

Specificity	Endogenous
-------------	------------

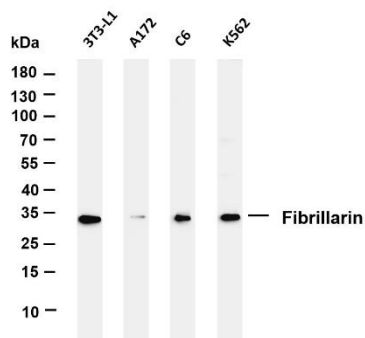
Target Information

Gene name	FBL FIB1 FLRN
Protein Name	rRNA 2'-O-methyltransferase fibrillarin (34 kDa nucleolar scleroderma antigen)

Organism	Gene ID	UniProt ID
Human	2091	P22087
Mouse	100044829	P35550
Rat	292747	P22509

Cellular Localization	Nucleus
-----------------------	---------

Validation Data



Various whole cell lysates were separated by 4-20% SDS-PAGE, and the membrane was blotted with anti-Fibrillarin antibody. The HRP-conjugated Goat anti-Rabbit IgG(H + L) antibody was used to detect the antibody.

Lane 1: 3T3-L1

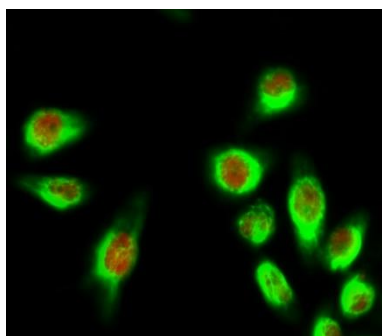
Lane 2: A172

Lane 3: C6

Lane 4: K562

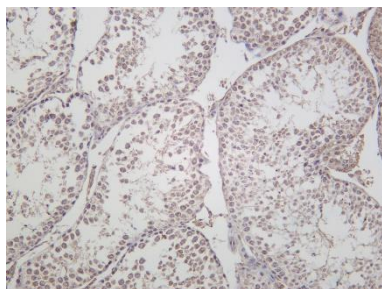
Predicted band size: 34kDa

Observed band size: 34kDa

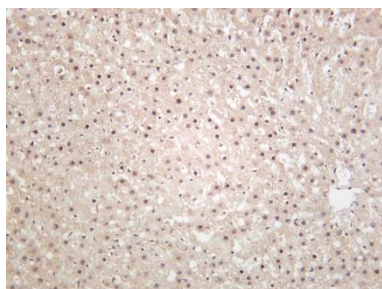


Immunofluorescence analysis of HeLa cell.

1. E2F-1 Antibody(red) was diluted at 1:200(4° overnight). HER2 Monoclonal Antibody(11H9) (green) was diluted at 1:200(4° overnight).
2. Goat Anti Rabbit Alexa Fluor 594 was diluted at 1:1000(room temperature, 50min). Goat Anti Mouse Alexa Fluor 488 was diluted at 1:1000(room temperature, 50min).



Mouse testis was stained with Anti-Fibrillarin rabbit antibody



Rat liver was stained with anti-Fibrillarin rabbit antibody

For Research Use Only