

GM130 Rabbit mAb (AR1157)

Key Features

Host Species:	Rabbit
Reactivity:	Human, Mouse, Rat
Applications:	WB, IHC, IF, IP, ELISA
Isotype:	IgG, Kappa
MW:	113kD (Calculated) 130kD (Observed)

Recommended Dilution Ratios

IHC:	1:200-1000
WB:	1:2000-10000
IF:	1:200-1000
ELISA:	1:5000-20000
IP:	1:50-200

Storage

-15°C to -25°C/1 year (Do not lower than -25°C)

Basic Information

Clonality	Monoclonal
-----------	------------

Immunogen Information

Specificity	Endogenous
-------------	------------

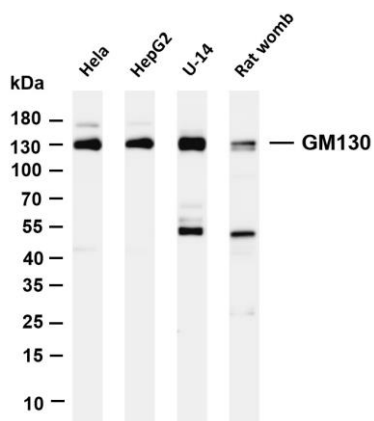
Target Information

Gene name	GOLGA2
Protein Name	GM130

Organism	Gene ID	UniProt ID
Human	2801	Q08379

Cellular Localization	Cytoplasm
Tissue specificity	Brain, Cervix, Colon adenocarcinoma, Epithelium, Heart, Hepatocyte, Liver, Placenta, Thymus

Validation Data



Various whole cell lysates were separated by 4-20% SDS-PAGE, and the membrane was blotted with anti-GM130 antibody. The HRP-conjugated Goat anti-Rabbit IgG(H + L) antibody was used to detect the antibody.

Lane 1: HeLa

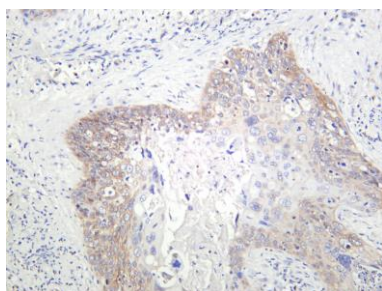
Lane 2: HepG2

Lane 3: U-14

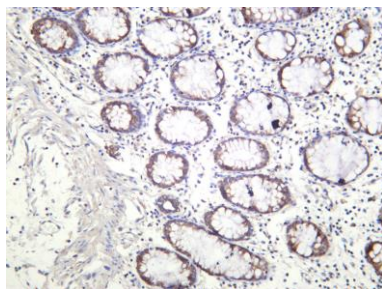
Lane 4: Rat womb

Predicted band size: 113kDa

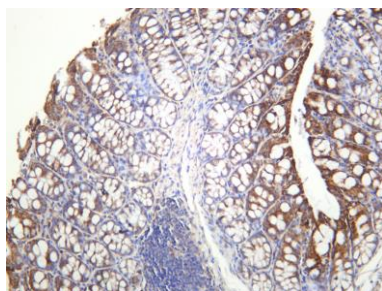
Observed band size: 130kDa



Human cervical carcinoma was stained with anti-GM130 rabbit antibody



Human colon was stained with anti-GM130 rabbit antibody



Mouse colon was stained with anti-GM130 rabbit antibody

For Research Use Only