

c-Fos Rabbit mAb (AR1315)

Key Features

Host Species:	Rabbit
Reactivity:	Human,Mouse,Rat
Applications:	WB,IF,IP,ELISA
Isotype:	IgG,Kappa
MW:	41kD (Calculated) 55kD (Observed)

Recommended Dilution Ratios

WB:	1:2000-10000
IF:	1:200-1000
ELISA:	1:5000-20000
IP:	1:50-200

Storage

-15°C to -25°C/1 year (Do not lower than -25°C)

Basic Information

Clonality	Monoclonal
-----------	------------

Immunogen Information

Specificity	Endogenous
-------------	------------

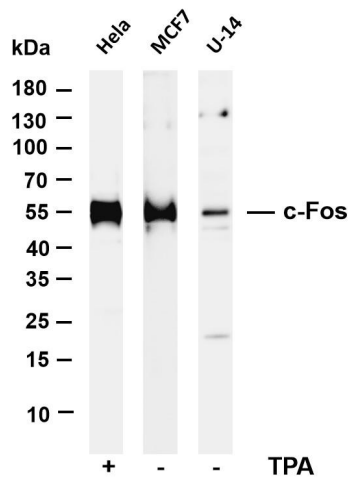
Target Information

Gene name	FOS
Protein Name	Proto-oncogene c-Fos

Organism	Gene ID	UniProt ID
Human	2353	P01100
Mouse	14281	P01101
Rat	140675	P12841

Cellular Localization	Nucleus
Tissue specificity	Lung adenocarcinoma, Pancreas, Tongue

Validation Data



Various whole cell lysates were separated by 4-20% SDS-PAGE, and the membrane was blotted with anti-c-Fos antibody. The HRP-conjugated Goat anti-Rabbit IgG(H + L) antibody was used to detect the antibody.

Lane 1: HeLa treated by Phorbol 12 myristate 13-acetate (TPA) with 24 hours Lane

2: MCF7

Lane 3: U-14

Predicted band size: 41kDa

Observed band size: 55kDa

For Research Use Only