

CD117/c-Kit Rabbit mAb (AR1316)

Key Features

Host Species:	Rabbit
Reactivity:	Human,Mouse
Applications:	WB,IF,IP,ELISA
Isotype:	IgG,Kappa
MW:	110kD (Calculated) 130kD (Observed)

Recommended Dilution Ratios

WB:	1:500-2000
IF:	1:200-1000
ELISA:	1:5000-20000
IP:	1:50-200

Storage

-15°C to -25°C/1 year (Do not lower than -25°C)

Basic Information

Clonality	Monoclonal
-----------	------------

Immunogen Information

Specificity	Endogenous
-------------	------------

Target Information

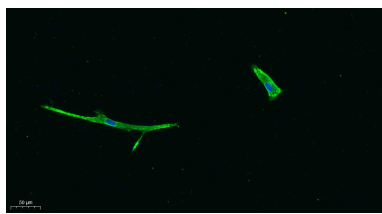
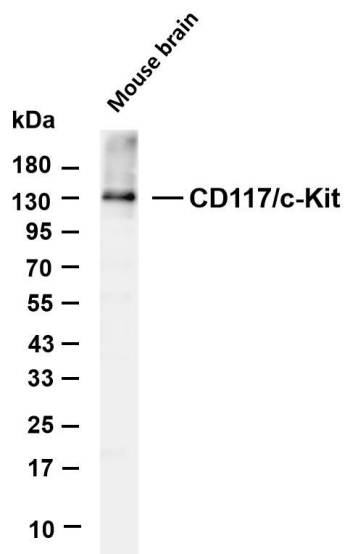
Gene name	KIT SCFR
Protein Name	C Kit; c-Kit Ligand;CD117; KIT proto oncogene receptor tyrosine kinase; KIT_HUMAN; Mast/stem cell growth factor receptor Kit;MGF;p145 c-kit; PBT; Piebald trait protein; Proto oncogene c Kit; Proto oncogene tyrosine protein kinase Kit; Proto-oncogene c-Kit; SCF Receptor; SCFR; soluble KIT variant 1;Steel Factor Receptor; Stem cell factor receptor; tyrosine protein kinase Kit; Tyrosine protein kinase Kit; v kit Hardy Zuckerman 4 feline sarcoma viral oncogene like protein;

Organism	Gene ID	UniProt ID
Human	3815	P10721
Mouse	16590	P05532

Cellular Localization

Tissue specificity

Validation Data



Cytoplasmic, Membranous

Appendix

Various whole cell lysates were separated by 4-20% SDS-PAGE, and the membrane was blotted with anti-CD117/c-Kit antibody. The HRP-conjugated Goat anti-Rabbit IgG (H + L) antibody was used to detect the antibody.

Lane 1: Mouse brain

Predicted band size: 110kDa

Observed band size: 130kDa

Immunofluorescence analysis of A549.

1. primary Antibody was diluted at 1:200(4°C overnight).
2. Goat Anti Rabbit IgG (H&L) - Alexa Fluor 488 Secondary antibody was diluted at 1:1000(room temperature, 50min).
3. DAPI (blue) 10min.

For Research Use Only