

## Connexin 43 Rabbit mAb (AR1317)

### Key Features

Host Species:	Rabbit
Reactivity:	Human, Mouse, Rat
Applications:	WB, IHC, IF, IP, ELISA
Isotype:	IgG, Kappa
MW:	43kD (Calculated) 43kD (Observed)

### Recommended Dilution Ratios

IHC:	1:200-1000
WB:	1:2000-10000
IF:	1:200-1000
ELISA:	1:5000-20000
IP:	1:50-200

### Storage

-15°C to -25°C/1 year (Do not lower than -25°C)

### Basic Information

Clonality	Monoclonal
-----------	------------

### Immunogen Information

Specificity	Endogenous
-------------	------------

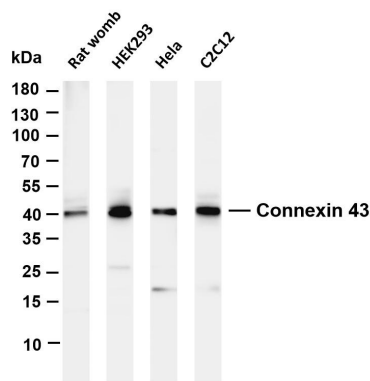
### Target Information

Gene name	GJA1
Protein Name	Gap junction alpha-1 protein

Organism	Gene ID	UniProt ID
Human	2697	P17302
Mouse	14609	P23242
Rat	24392	P08050

Cellular Localization	Membrane
Tissue specificity	Expressed in the heart and fetal cochlea.

## Validation Data



Various whole cell lysates were separated by 4-20% SDS-PAGE, and the membrane was blotted with anti-Connexin 43 antibody. The HRP-conjugated Goat anti-Rabbit IgG(H + L) antibody was used to detect the antibody.

Lane 1: Rat womb

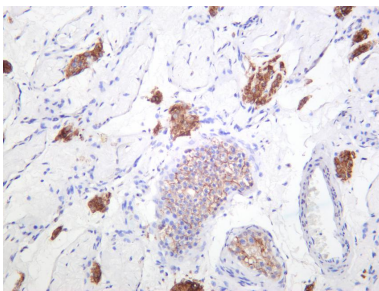
Lane 2: HEK293

Lane 3: Hela

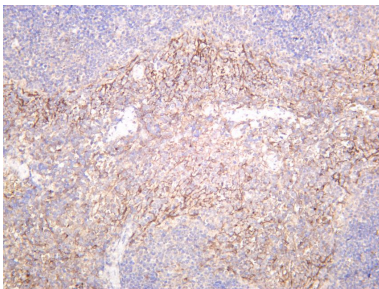
Lane 4: C2C12

Predicted band size: 43kDa

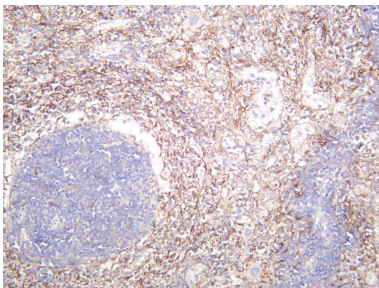
Observed band size: 43kDa



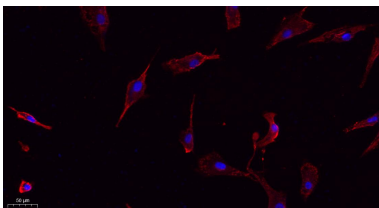
Human testis was stained with anti-Connexin 43 rabbit antibody



Mouse spleen was stained with anti-Connexin 43 rabbit antibody

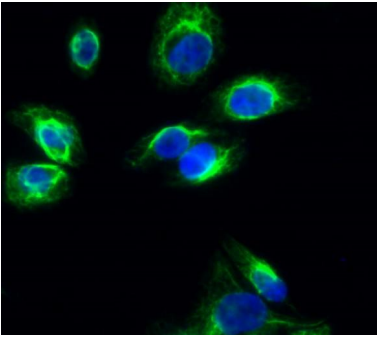


Rat spleen was stained with anti-Connexin 43 rabbit antibody



Immunofluorescence analysis of A549.

1. primary Antibody(red) was diluted at 1:200(4°C overnight).
2. Goat Anti Rabbit IgG (H&L) - Alexa Fluor 594 Secondary antibody was diluted at 1:1000(room temperature, 50min).
3. DAPI (blue) 10min.



Immunofluorescence analysis of Hela cell.

1. Connexin 43 Antibody(green) was diluted at 1:200(4° overnight).
2. Goat Anti Rabbit Alexa Fluor 488 was diluted at 1:1000(room temperature, 50min).
3. DAPI (blue) 10min.

For Research Use Only