

## CREBBP Rabbit mAb (AR1318)

### Key Features

Host Species:	Rabbit
Reactivity:	Human, Mouse, Rat
Applications:	WB, IHC, IF, IP, ELISA
Isotype:	IgG, Kappa
MW:	265kD (Calculated) 300kD (Observed)

### Recommended Dilution Ratios

IHC:	1:200-1000
WB:	1:2000-10000
IF:	1:200-1000
ELISA:	1:5000-20000
IP:	1:50-200

### Storage

-15°C to -25°C/1 year (Do not lower than -25°C)

### Basic Information

Clonality	Monoclonal
-----------	------------

### Immunogen Information

Specificity	Endogenous
-------------	------------

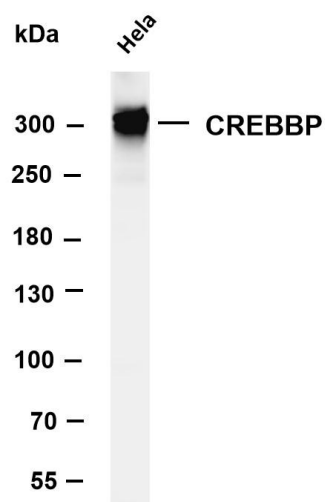
### Target Information

Gene name	CREBBP CBP
Protein Name	CREB-binding protein (EC 2.3.1.48)

Organism	Gene ID	UniProt ID
Human	1387	Q92793
Mouse		P45481

Cellular Localization	Nucleus
-----------------------	---------

## Validation Data

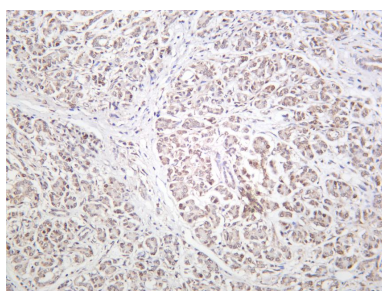


Various whole cell lysates were separated by 4-8% SDS-PAGE, and the membrane was blotted with anti-CREBBP antibody. The HRP-conjugated Goat anti-Rabbit IgG(H + L) antibody was used to detect the antibody.

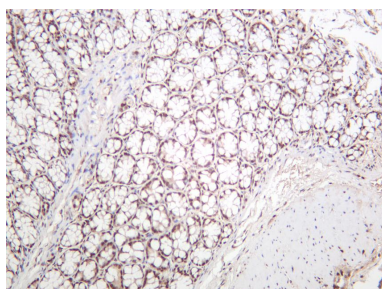
Lane 1: HeLa

Predicted band size: 265kDa

Observed band size: 300kDa



Human pancreas was stained with anti-CREBBP rabbit antibody



Mouse colon was stained with anti-CREBBP rabbit antibody

For Research Use Only