

Src Rabbit mAb (AR1319)

Key Features

Host Species:	Rabbit
Reactivity:	Human, Mouse, Rat
Applications:	WB, IHC, IF, IP, ELISA
Isotype:	IgG, Kappa
MW:	60kD (Calculated) 60kD (Observed)

Recommended Dilution Ratios

IHC:	1:1000-4000
WB:	1:2000-10000
IF:	1:200-1000
ELISA:	1:5000-20000
IP:	1:50-200

Storage

-15°C to -25°C/1 year (Do not lower than -25°C)

Basic Information

Clonality	Monoclonal
-----------	------------

Immunogen Information

Specificity	Endogenous
-------------	------------

Target Information

Gene name	SRC SRC1
Protein Name	Src

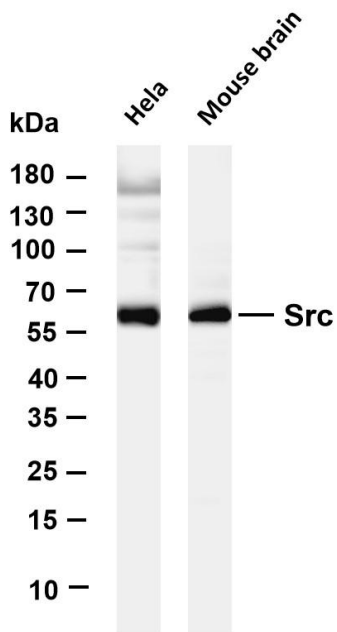
Organism	Gene ID	UniProt ID
Human	6714	P12931
Mouse	20779	P05480
Rat		Q9WUD9

Cellular Localization	Cytoplasm, Nucleus
-----------------------	--------------------

Tissue specificity	Expressed ubiquitously. Platelets, neurons and osteoclasts express 5-fold to 200-fold higher levels than most other tissues.; [Isoform
--------------------	--

1]: Expressed in spleen and liver; [Isoform 2]: Expressed in brain;
[Isoform 3]: Expressed in brain.

Validation Data



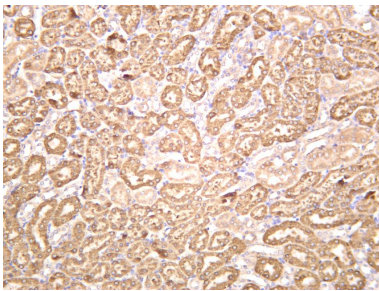
Various whole cell lysates were separated by 4-20% SDS-PAGE, and the membrane was blotted with anti-Src antibody. The HRP-conjugated Goat anti Rabbit IgG(H + L) antibody was used to detect the antibody.

Lane 1: HeLa

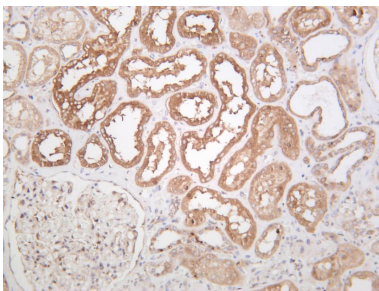
Lane 2: Mouse brain

Predicted band size: 60kDa

Observed band size: 60kDa



Mouse kidney was stained with anti-Src rabbit antibody



Human kidney was stained with anti-Src rabbit antibody

For Research Use Only