

Desmin Rabbit mAb (AR1323)

Key Features

Host Species:	Rabbit
Reactivity:	Human,Mouse,Rat
Applications:	WB,IHC,IF,IP,ELISA
Isotype:	IgG,Kappa
MW:	54kD (Calculated) 54kD (Observed)

Recommended Dilution Ratios

IHC:	1:1000-5000
WB:	1:20000-50000
IF:	1:200-1000
ELISA:	1:5000-20000
IP:	1:50-200

Storage

-15°C to -25°C/1 year (Do not lower than -25°C)

Basic Information

Clonality	Monoclonal
-----------	------------

Immunogen Information

Specificity	Endogenous
-------------	------------

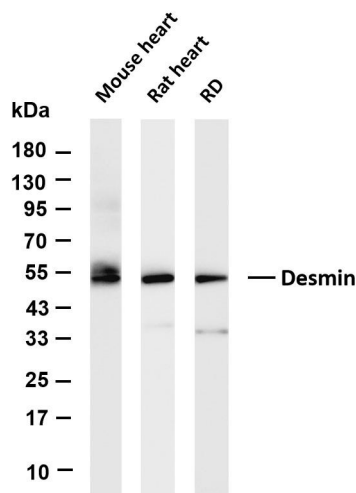
Target Information

Gene name	DES
Protein Name	CMD1I; CSM1; CSM2; DES; DESM_HUMAN; Desmin

Organism	Gene ID	UniProt ID
Human	1674	P17661
Mouse		P31001
Rat		P48675

Cellular Localization	Cytoplasmic
Tissue specificity	Appendix/ Colon

Validation Data



Various whole cell lysates were separated by 4-20% SDS-PAGE, and the membrane was blotted with anti-Desmin antibody. The HRP-conjugated Goat anti-Rabbit IgG(H + L) antibody was used to detect the antibody.

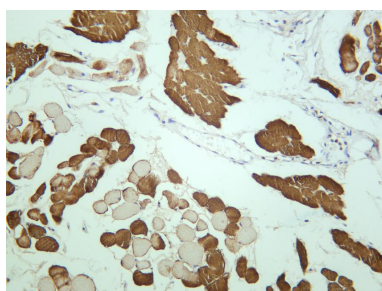
Lane 1: Mouse heart

Lane 2: Rat heart

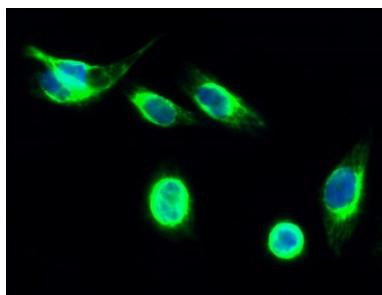
Lane 3: RD

Predicted band size: 54kDa

Observed band size: 54kDa



Human skeletal muscle was stained with anti-Desmin rabbit antibody



Immunofluorescence analysis of Hela cell.

1. Desmin Monoclonal Antibody(green) was diluted at 1:200(4° overnight).
2. Goat Anti Rabbit Alexa Fluor 488 was diluted at 1:1000(room temperature, 50min).
3. DAPI (blue) 10min.

For Research Use Only