

## DNA PKcs Rabbit mAb (AR1324)

### Key Features

Host Species:	Rabbit
Reactivity:	Human, Mouse, Rat
Applications:	WB, IHC, IF, IP, ELISA
Isotype:	IgG, Kappa
MW:	469kD (Calculated) 469kD (Observed)

### Recommended Dilution Ratios

IHC:	1:200-1000
WB:	1:2000-10000
IF:	1:200-1000
ELISA:	1:5000-20000
IP:	1:50-200

### Storage

-15°C to -25°C/1 year (Do not lower than -25°C)

### Basic Information

Clonality	Monoclonal
-----------	------------

### Immunogen Information

Specificity	Endogenous
-------------	------------

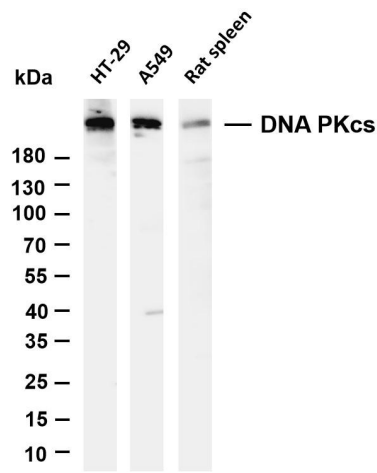
### Target Information

Gene name	PRKDC
Protein Name	DNA-dependent protein kinase catalytic subunit

Organism	Gene ID	UniProt ID
Human	5591	P78527
Mouse	19090	P97313

Cellular Localization	Nucleus
Tissue specificity	Brain, Cervix carcinoma, Epithelium, Fetal lung, Placenta

# Validation Data



Various whole cell lysates were separated by 4-20% SDS-PAGE, and the membrane was blotted with anti-DNA PKcs antibody. The HRP-conjugated Goat anti-Rabbit IgG(H + L) antibody was used to detect the antibody.

Lane 1: HT-29

Lane 2: A549

Predicted band size: 469kDa

Observed band size: 469kDa

For Research Use Only