

## E2F-1 Rabbit mAb (AR1326)

### Key Features

Host Species:	Rabbit
Reactivity:	Human, Mouse, Rat
Applications:	WB, IHC, IF, IP, ELISA
Isotype:	IgG, Kappa
MW:	47kD (Calculated) 60kD (Observed)

### Recommended Dilution Ratios

IHC:	1:200-1000
WB:	1:2000-10000
IF:	1:200-1000
ELISA:	1:5000-20000
IP:	1:50-200

### Storage

-15°C to -25°C/1 year (Do not lower than -25°C)

### Basic Information

Clonality	Monoclonal
-----------	------------

### Immunogen Information

Specificity	Endogenous
-------------	------------

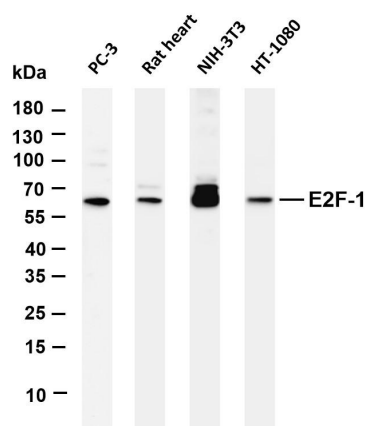
### Target Information

Gene name	E2F1
Protein Name	Transcription factor E2F1

Organism	Gene ID	UniProt ID
Human	1869	Q01094
Mouse	13555	Q61501

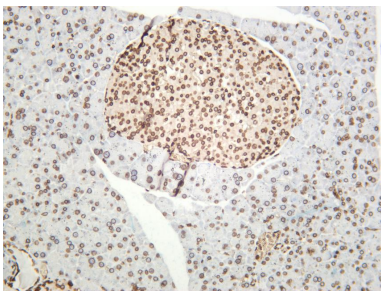
Cellular Localization	Nucleus
Tissue specificity	Brain, Epithelium, Pancreas, Skin

Validation Data

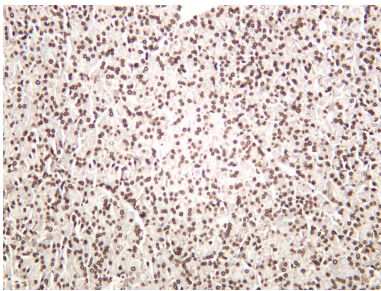


Various whole cell lysates were separated by 4-20% SDS-PAGE, and the membrane was blotted with anti-E2F-1 antibody. The HRP-conjugated Goat anti-Rabbit IgG(H + L) antibody was used to detect the antibody.

- Lane 1: PC-3
- Lane 2: Rat heart
- Lane 3: NIH-3T3
- Lane 4: HT-1080
- Predicted band size: 47kDa
- Observed band size: 60kDa



Mouse pancreas was stained with anti-E2F-1 rabbit antibody



Rat pancreas was stained with anti-E2F-1 rabbit antibody

For Research Use Only