

## ERK5 Rabbit mAb (AR1329)

### Key Features

Host Species:	Rabbit
Reactivity:	Human, Mouse, Rat
Applications:	WB, IF, IP, ELISA
Isotype:	IgG, Kappa
MW:	88kD (Calculated) 115kD (Observed)

### Recommended Dilution Ratios

WB:	1:2000-10000
IF:	1:200-1000
ELISA:	1:5000-20000
IP:	1:50-200

### Storage

-15°C to -25°C/1 year (Do not lower than -25°C)

### Basic Information

Clonality	Monoclonal
-----------	------------

### Immunogen Information

Specificity	Endogenous
-------------	------------

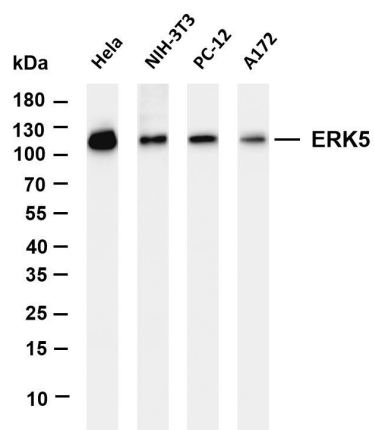
### Target Information

Gene name	MAPK7, ERK5
Protein Name	Mitogen-activated protein kinase 7

Organism	Gene ID	UniProt ID
Human	5598	Q13164
Mouse		Q9WVS8
Rat		P0C865

Cellular Localization	Cytoplasm, Nucleus
Tissue specificity	Expressed in many adult tissues. Abundant in heart, placenta, lung, kidney and skeletal muscle. Not detectable in liver.

## Validation Data



Various whole cell lysates were separated by 4-20% SDS-PAGE, and the membrane was blotted with anti-ERK5 antibody. The HRP-conjugated Goat anti-Rabbit IgG(H + L) antibody was used to detect the antibody.

Lane 1: HeLa

Lane 2: NIH-3T3

Lane 3: PC-12

Lane 4: A172

Predicted band size: 88kDa

Observed band size: 115kDa

For Research Use Only