

ErbB-3 Rabbit mAb (AR1328)

Key Features

Host Species:	Rabbit
Reactivity:	Human, Mouse, Rat
Applications:	WB, IF, IP, ELISA
Isotype:	IgG, Kappa
MW:	148kD (Calculated) 185kD (Observed)

Recommended Dilution Ratios

WB:	1:2000-10000
IF:	1:200-1000
ELISA:	1:5000-20000
IP:	1:50-200

Storage

-15°C to -25°C/1 year (Do not lower than -25°C)

Basic Information

Clonality	Monoclonal
-----------	------------

Immunogen Information

Specificity	Endogenous
-------------	------------

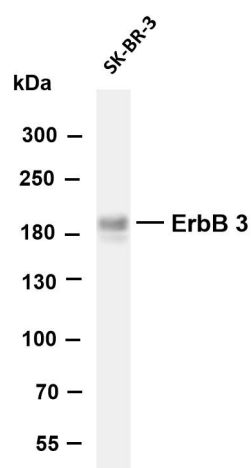
Target Information

Gene name	ERBB3, HER3
Protein Name	Receptor tyrosine-protein kinase erbB-3

Organism	Gene ID	UniProt ID
Human	2065	P21860
Mouse	13867	Q61526
Rat	29496	Q62799

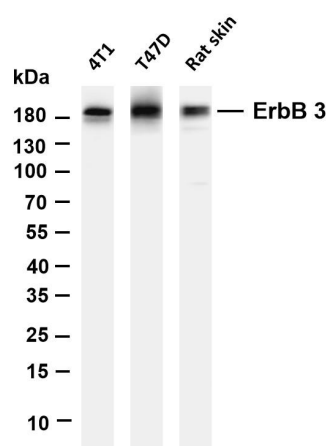
Cellular Localization	Membrane
Tissue specificity	Epithelial tissues and brain

Validation Data



Various whole cell lysates were separated by 4-8% SDS-PAGE, and the membrane was blotted with anti-ErbB-3 antibody. The HRP-conjugated Goat anti-Rabbit IgG(H + L) antibody was used to detect the antibody.

Lane 1: SKBR-3
Predicted band size: 148kDa
Observed band size: 185kDa



Various whole cell lysates were separated by 4-20% SDS-PAGE, and the membrane was blotted with anti-ErbB-3 antibody. The HRP-conjugated Goat anti-Rabbit IgG(H + L) antibody was used to detect the antibody.

Lane 1: 4T1
Lane 2: T47D
Lane 3: Rat skin
Predicted band size: 148kDa
Observed band size: 185kDa

For Research Use Only